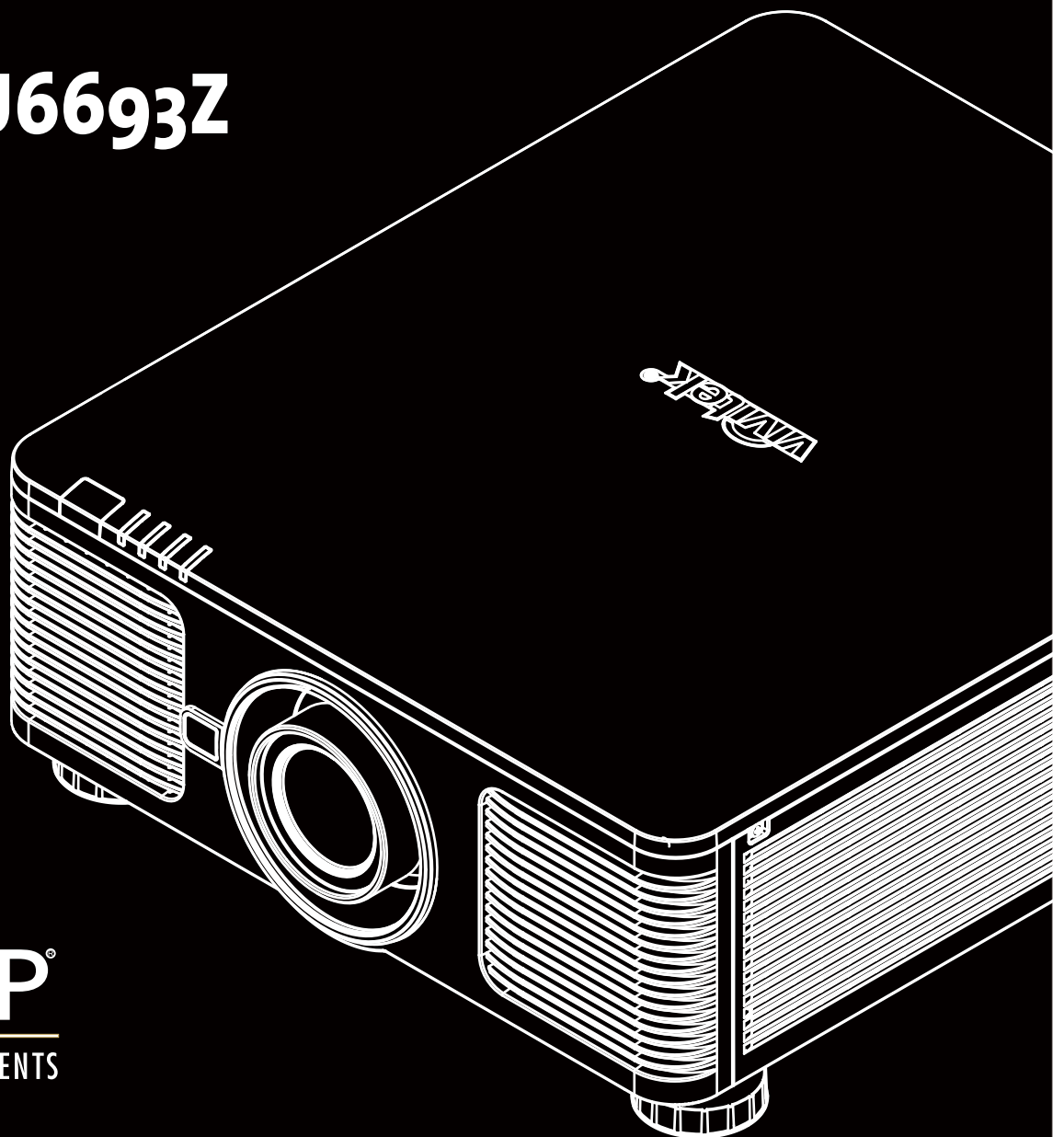




# User's Manual

## DU6693Z



## Table of Contents

Copyright .....	3
Copyright .....	3
Disclaimer .....	3
About the Manual .....	3
Important Safety Guidelines .....	4
Safety Notification .....	4
Installation and Use Notices .....	6
Disposal of Old Electric and Electronic Equipment .....	6
Important Recycling Instructions .....	6
Introduction .....	7
Packing Checklist .....	7
Projector Overview .....	8
IO Panel .....	10
Control Panel .....	11
Remote Control .....	12
Installation and Setting up .....	14
Inserting or Changing the Remote Control Batteries .....	14
Installing the Projector .....	15
Precautions for Installation .....	15
Mounting the Projector .....	16
Installing or Removing the Optional Lens .....	17
Connecting to AC Power Supply .....	19
Turning On the Projector .....	19
Turning Off the Projector .....	20
Adjusting the Projection Mode .....	21
Adjusting the Projected Image Position .....	22
Adjusting the Focus and Zoom .....	22
Preventing the Unauthorized Use of the Projector .....	23
Using the Control Panel Lock .....	23
Using the Security Lock .....	24
Using Control ID for Multi-Projector Application .....	25
Using the Constant Brightness Function to Maintain the Brightness Output .....	27
Connecting Equipment .....	28
Connecting a Computer .....	28
Connecting a Video Device .....	28
Connecting a Control Equipment .....	29
Connecting a Screen Trigger .....	30
Connecting an HDBaseT Transmitter .....	31
Using the Projector .....	32
Using the On-Screen Display .....	32
OSD Menu Tree .....	33
OSD Operation - PICTURE .....	37
OSD Operation - SIGNAL .....	39
OSD Operation - SETUP .....	41
OSD Operation - INSTALLATION .....	44
OSD Operation - SERVICE .....	49
Product Specification .....	50
Supported Signal Input Timing .....	51

Configurations of Terminals.....	54
DU6693Z Lens Series.....	55
Product Dimensions.....	56
LED Indication.....	57
Common Problems and Solutions.....	58
About the Vivitek Support.....	60

## Copyright

### Copyright

The User's Manual (including all pictures, illustrations and software) is protected by the international copyright right law. All rights are reserved. No duplication of the manual or any content included in the manual is allowed without the written consent of the manufacturer.

Vivitek is the trademark of Vivitek Corporation. ©All rights reserved. 2017

### Disclaimer

The information in the manual is subject to change without notice. The manufacturer does not provide any statement or warranty of the contents in the manual and clearly give up the implied warranties of merchantability and of fitness for a particular purpose. The manufacturer reserves the rights to modify the publication and change the contents of the materials at any time without notice to any person.

### About the Manual

The manual describes how to install and use the projector and is applicable to the end-user. Relevant information (such as illustrations and descriptions) is put on the same page as possible as we can. The format, easy for printing, is convenient for reading and paper-saving which is beneficial to environmental protection. It is suggested printing the page you need.

## Important Safety Guidelines

Thank you for purchasing the high quality product!

Read the Manual carefully to obtain the best performance. The Manual provides instructions to use the menu and implement the operation.

### Safety Notification

**CAUTION** To turn off the main power, ensure to unplug from the power outlet.



**CAUTION** To prevent electric shock, do not open the cabinet. There are high-voltage components inside. Refer service to qualified service personnel.



**CAUTION** The symbol warns the user about electric shock caused by voltage not insulated. Therefore, it is dangerous to make any kind of contact with any parts of inside units.



**CAUTION** To prevent the projector from electrical discharge or electric shock, do not expose the projector to rain or moist environment. Do not use the plug with an extension cord or an outlet unless all the prongs can be fully inserted.



This symbol alerts the user that important information which should be read carefully to avoid problems concerning the operation and maintenance.

### WARNING TO CALIFORNIA RESIDENTS:

Handling the cables supplied with this equipment might expose user to a little lead, a chemical known to the State of California, resulting in risks of barrenness. Please remember to wash hands after handling.

### NOTIFICATION (CANADA)

This Class A digital equipment complies with Canadian ICES-003.

### CE NOTIFICATION

This is a Class A product, which complies with rules for CE marking. This product may cause radio interference that the user may be supposed to take adequate measures.

### FCC NOTIFICATION

This device complies with part 15 of the FCC Rules. The operation is subject to the following two conditions:

- (1) This device may not cause harmful interference;
- (2) This device must accept any interference received, including interference that may cause undesired operation. This equipment has been tested and found to comply with part 15 of the FCC Rules. These requirements are designed to provide reasonable protection against harmful interference when the equipment operates in a commercial environment. This equipment might generate radio frequency energy. If user does not install or use in accordance with the instructions in manual, the radio frequency energy may interfere radio reception. If the above scenario occurs, the user may be responsible for correcting the interference



### WARNING!

Changes or modifications without approval from Vivitek could void the user's authorization to operate the product.

**LIGHT MODULE**

- A light module containing multiple laser diodes acts as the light source in the product.
- These laser diodes are sealed in the light module. It is recommended to ask a dealer for maintenance or repair services of the light module.
- The end user is not allowed to replace the light module.
- Contact distributor who provides the qualified service for light module replacement and further information.

**LASER SAFETY NOTIFICATION AND CAUTION**



Do not stare at the lens while in use

- CLASS 3R LASER PRODUCT
- This Laser Product is designated as Class 3R during all procedures of operation.
- LASER LIGHT - AVOID DIRECT EYE EXPOSURE.
- Do not point laser or allow reflected laser light toward other people or reflective objects.
- Direct or scattered light can be hazardous to eyes and skin.
- There is a potential hazard of eye exposure to laser radiation if the included instructions are not followed.
- Caution – use of controls, adjustments or performance of procedures other than those specified herein may result in hazardous radiation exposure.

**Laser Parameters:**

Wavelength	: 450nm - 460nm	Total internal power	: >100W
Mode of operation	: Pulsed, due to frame rate	Apparent source size	: >10mm, at lens stop
Pulse width	: 0.74ms	Divergence	: >100 mili Radian
Maximum laser energy	: 0.376mJ		

**Product Label**

Manufacturer's ID Label, Explanatory Label and Certification Statement Label

The image shows three labels for the projector. The left label is the Manufacturer's ID Label, featuring the Vivitek logo, model number DU6693Z, and various safety certifications (UL, CE, FCC, etc.). The middle label is the Explanatory Label, providing detailed safety instructions in multiple languages (English, Chinese, French) regarding laser radiation and eye safety. The right label is the Certification Statement Label, which includes the text 'Complies with FDA performance standards for laser products except for deviations pursuant to Laser Notice No. 5D, dated June 24, 2007' and a laser radiation warning symbol.

**Hazard Warning Symbol and Aperture Label**

This block contains two labels. The top label is the Hazard Warning Symbol, which includes the text 'Complies with FDA performance standards for laser products except for deviations pursuant to Laser Notice No. 5D, dated June 24, 2007' and a laser radiation warning symbol. The bottom label is the Aperture Label, which contains the text 'LASER RADIATION AVOID DIRECT EYE EXPOSURE CLASS 3R LASER PRODUCT' and provides technical specifications in English, Chinese, and French, including 'Emitted wavelength: 450-460 nm', 'Max. Pulse energy: 0.376 mJ', and 'Pulse duration: 0.74 ms'. It also includes the regulatory standard 'GB 7247.1-2012 / IEC/EN 60825-1:2007' and 'CLASS 1 LASER PRODUCT IEC/EN 60825-1:2014'.

This block shows a yellow rectangular label with a black border. On the left is a laser radiation warning symbol. On the right, the text reads 'LASER APERTURE' in English, '激光辐射窗口' in Chinese, and 'OUVERTURE LASER' in French.

## Installation and Use Notices

1. Read and keep this manual properly.
2. Pay attention to all the noted warnings, and follow all the guidelines and descriptions in this manual.
3. Do not use the projector near water.
4. Do not install the equipment near the thermal sources, such as heaters, radiators, furnace, amplifiers, and any other equipment that may generate heat.
5. Be careful while holding the equipment or moving the trolley with projector to prevent the equipment from turning over.
6. Notice whether there is any parts with flaws after receiving the projector.
7. Please notice that the projector will not power on until the lens is fitted. The protection covering the lens should be taken to install the lens.
8. Do not let any vent be obstructed.
9. Do not destroy the safety protection function of polarized or grounding plug of the power cord. A polarized plug has one wide and one narrow blade. The plug has two blades and one grounding blade. The wide blade or grounding blade is provided for the safety concerns. If the plug provided does not match the outlet, please contact the electrician to change outlet.
10. The +12V trigger only outputs 12V DC trigger signal. Do not connect other power input or output. Otherwise, the equipment may malfunction.
11. Adjust the slide switch with suitable volt input, and then plug in the projector; the red LED indicator would flash and then stabilize, getting into standby mode. User should only use the connectors or accessories provided by the manufacturer.
12. When user turns on the projector, the red LED indicator would flash until stabilize. Do not look at the lens directly while the projector is running.
13. Unplug the power cord of the equipment if there is a thunderstorm or the equipment is not going to be used for a long time.
14. The packaging materials can be kept properly for transportation use afterward.
15. If any breakdown occurs, please contact dealer or manufacture for qualified repair service.



## Disposal of Old Electric and Electronic Equipment

The symbol on your product or the package represents that the product should not be treated as the normal household waste when discarded but should be carried to the recycling location of the waste electric and electronic equipment. The consequence on the environment and human health due to the incorrect disposal of the product can be prevented if it can be ensured that the product is properly discarded. Material recycling is helpful to the protection of natural resources. The symbol is only valid in the European Union. If you want to discard electrical and electronic equipment, contact the governmental authorities or your dealer for the correct method of disposal.

## Important Recycling Instructions

The product may contain other electronic wastes and may pose risk if not discarded properly. Abide by the local, state/provincial or federal laws of recycling or discarding. For more information, please visit the website and contact Electronic Industries Alliance (EIA) on [WWW.EIAE.ORG](http://WWW.EIAE.ORG).

## Introduction

The User's Manual describes the installation, setup and operation of the DU6693Z projector and provides assistance to the installation personnel and the end-user to fully develop the performance of the projector. VIVITEK has made every effort to ensure that the information in the Manual is correct at the time of printing. The contents may be frequently updated due to the continuous product improvement and customer feedback.

You can find the latest version of the Manual and the manual of other Vivitek products on [www.vivitekcorp.com](http://www.vivitekcorp.com).

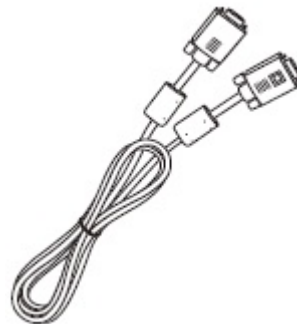
## Packing Checklist

The following items are included in the packaging box of the DU6693Z series projector. If any loss or damage to any item, contact your dealer or Vivitek customer service department.

AC Power Cord



VGA Signal Cable



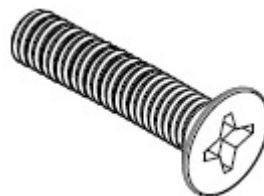
Wired Remote Cable



IR Remote Control



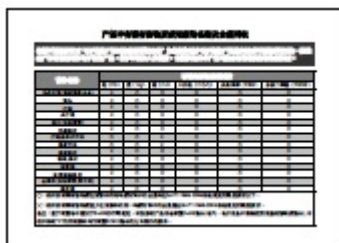
Anti-theft Screw (M4)  
(for Lens Installation)



User's Manual Disc



RoHS Card (China)



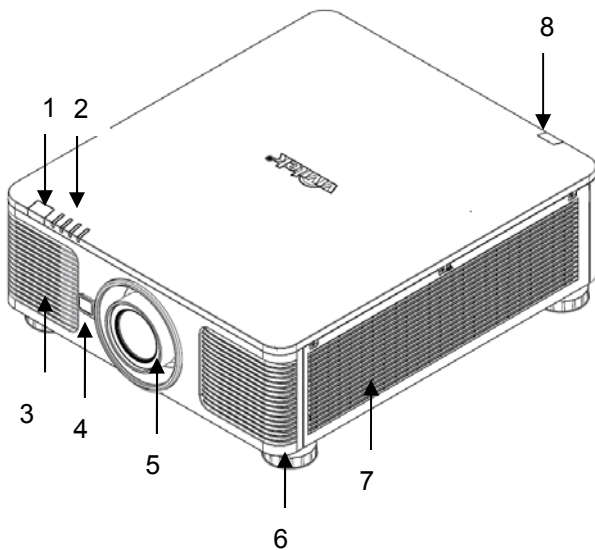
Certificate (China)





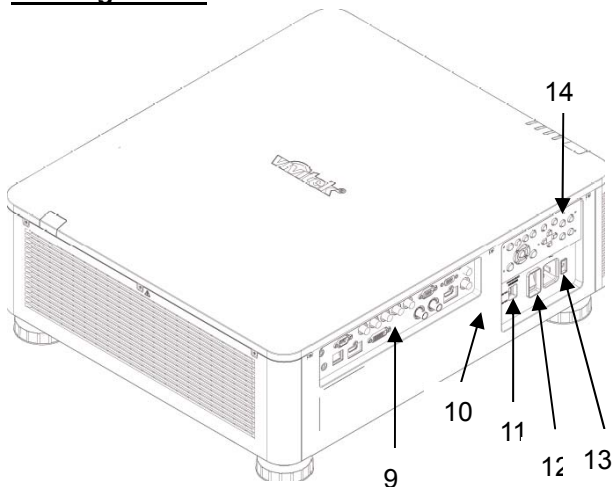
## Projector Overview

### Front-right View



- 1. Front IR Receiver**  
The Receiver for IR signals from the remote control.
- 2. LED Indicator**  
Display current projector status such as power, light source status and warning.
- 3. Air Intake**  
The fan pulls the cool air to the projector for system cooling.
- 4. Lens Release Button**  
Press the Lens Release button before removing the lens.
- 5. Lens hood**  
Remove the cover before installing the lens.
- 6. Height Adjuster**  
Adjust level of projector
- 7. Intake Vent**  
The fans pull air to cool the radiator of the projector.
- 8. Rear IR Receiver**  
The Receiver for IR signals from the remote control.

### Rear-right View



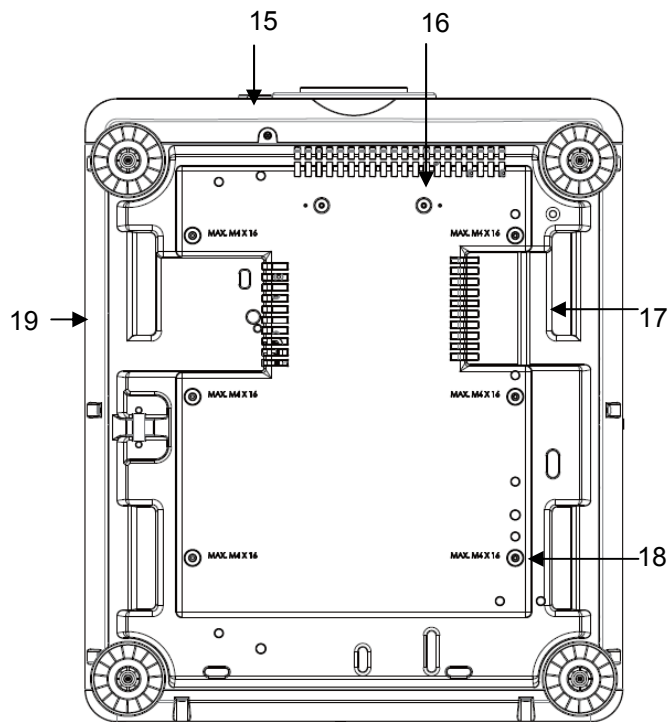
- 9. I/O Connector Panel**  
Connect to various input, control or output terminals to the projector.
- 10. Kensington Lock**  
Attach the projector to a permanent object with the Kensington slot and a security cable.
- 11. Slide Switch**  
Switch it to corresponding input voltage
- 12. AC Power Switch**  
Turn on/off the AC power of the projector.
- 13. AC Inlet**  
Connect the supplied power cable to this inlet.
- 14. Control Panel**  
Press the button to operate the OSD menu or adjust the lens Settings see OSD controls.



#### **Important:**

- The air passes through grill openings on the projector is for good air circulation. Do not obstruct any of the grill openings and keep the required distance from any object.

## Bottom View



### 15. Anti-theft Screw hole

The anti-theft screw can be tightened to prevent Lens removing by an unauthorized person.

### 16. Mounting Holes of Support Kit

These two screws holes can be used to fix support kits of ultra-short throw lens.

Note: The screws are for Lens support kits only; overloading may damage the projector or cause injury.

### 17. Recess for projector handling.

These four recesses can be used for handling the projector.

### 18. Ceiling Mounting Hole

Total six M4 screw holes with maximum depth 14mm.

### 19. Security Slot

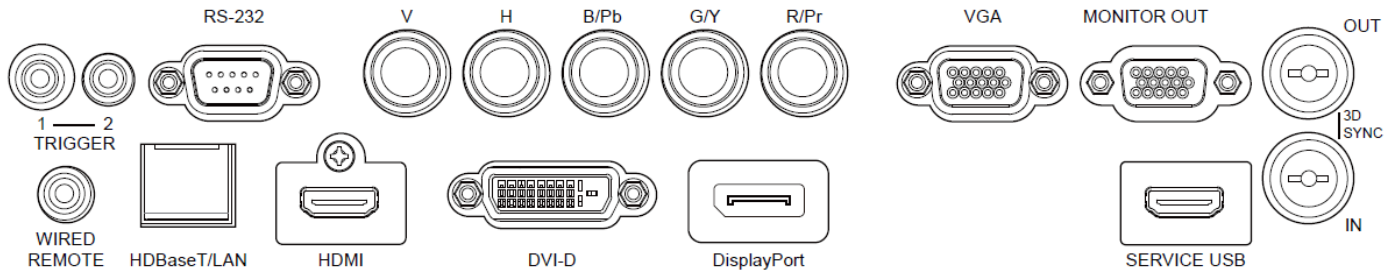
The slot can be used for Short-term protection



#### Note:

- When installing, ensure that you use only UL Listed ceiling mounts, Contact your dealer for information on mounting the projector on a ceiling.
- With ceiling installation, use approved mounting hardware & M4 screws; maximum depth of screw is 14 mm.

## IO Panel



### TRIGGER 1, 2 (12V +/-1.5V)

When connected to the screen through a 3.5mm cable, the screen deploys automatically on startup of the projector. The screen reacts when the projector is powered off.

### RS-232

The 9-pin D-sub interface is used to connect to the PC control system and projector maintenance.

### Component (V, H, B/Pb, G/Y, R/Pr)

Connect RGBHV or Component signal from computer or component video enabled device

### VGA

Provide the standard 15-pin VGA connection and can connect to RGB, HD Component or personal computer.

### MONITOR OUT

Connect to a monitor to display the projected content.

### 3D SYNC IN / OUT

Connect to the 3D IR synchronization signal transmitter.

### WIRED REMOTE

Connect the supplied remote controller to the projector.

### HDBaseT/LAN

Connect an Ethernet cable (Cat5/Cat6, not supplied) from a computer, network device, or HDBaseT transmitter.

### HDMI

Connect the HDMI cable from a computer or video device.

### DVI-D

Connect to DVI-D cable from a DVI-D output of the device.

### DisplayPort

Connect the DisplayPort cable from a computer or video device.

### Service USB

This connector is for service only.



#### Note for Trigger

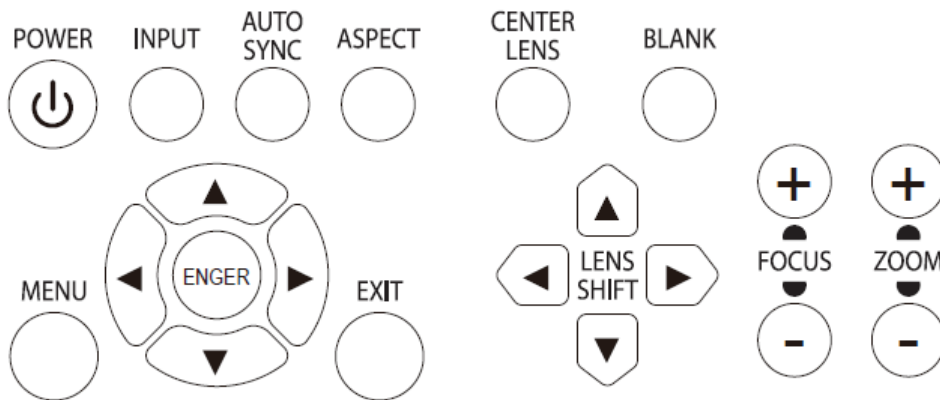
- When the projector is turned on, a control signal (DC 12V) outputs from this terminal.
- Do not use this jack for anything other than intended use.



#### Note for Wired Remote

- Please make sure whether the port for insertion is correct before the terminal of the wired remote control is inserted. The remote control may be damaged if inserted to the wrong port such as trigger. Do not use this jack for anything other than intended use

## Control Panel



### POWER

User the button to turn on/off the projector.

### INPUT

Push the button to select the input signal. HDMI, DVI, VGA, Component...etc.

### AUTO SYNC

Implement automatic signal synchronization.

### ASPECT

Change the aspect ratio of the current image and push the button to change to the next aspect ratio settings.

### MENU

Push the button to display or hide the OSD menu.

### UP/Down/Left/Right

Use the button to select the OSD option.

### ENTER

Use the button to select settings or confirm the changed settings.

### EXIT

Push the button to return to the menu on the previous level or exit the OSD menu.

### CENTER LENS

Push the button to center the lens and calibrate the parameter of lens shift, focusing and zooming.

Note: The lens memory function requires the accurate lens adjustment parameter. Please center the lens every time after the lens is mounted.

### Blank

Use the button to stop the projection temporarily.

### LENS SHIFT

Use these four buttons to move the projected image to the desired position.

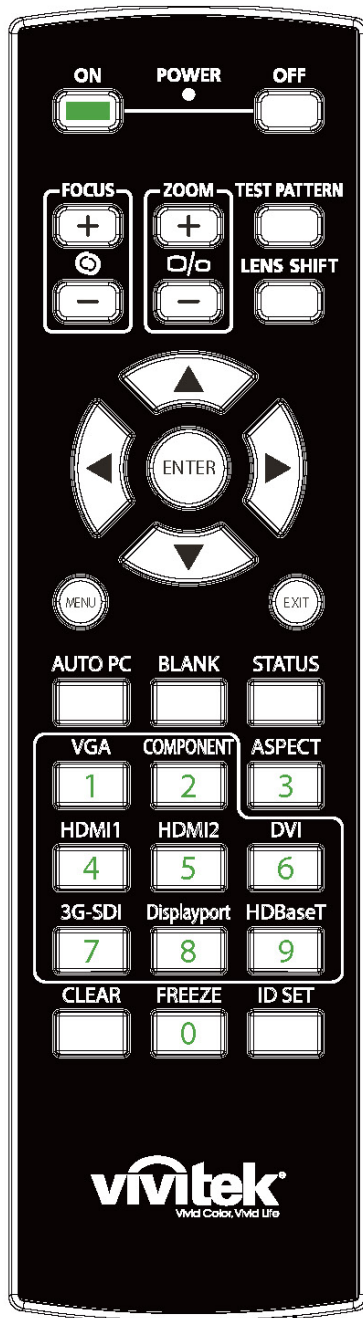
### FOCUS

Use the button to adjust the focus of the projected image.

### ZOOM

Use the button to zoom in/out the projected image.

## Remote Control



### On

Use the button to turn on the projector.

### OFF

Use the button to turn off the projector.

### FOCUS

Adjust the focus of the projected image.

### ZOOM

Zoom in/out the projected image.

### TEST PATTERN

Use the button to show the test pattern. Press this button again to switch to the next pattern. Press the EXIT button to return to the projected image.

### LENS SHIFT

Use the button to move the lens right or left.

### ENTER

Use the button to select settings or confirm the changed settings.

### MENU

Press the button to display or hide the OSD Menu.

### EXIT

Press the button to return to the previous Menu or exit the OSD Menu.

### AUTO PC

You can use this function to execute signal source auto synchronization

### BLANK

Press the button to temporarily interrupt the projection.

### STATUS

Show OSD MENU – SERVICE.

### VGA

Select VGA input source.

### COMPONENT

Select Component input source.

### ASPECT

Press the button to display aspect ratio options.

### HDMI1

Select HDMI input source.

**HDMI2** (Not available for this model)

### DVI

Select DVI-D input source.

**3G-SDI**(Not available for this model)

### DisplayPort

Select input source from DisplayPort.

### HDBaseT

Select HDBaseT input source.

### CLEAR

Erase the set ID number of the remote control; refer to the section “Using Control ID for Multi-projector Application” on page 26.

### FREEZE

Freeze the projected image or resume the projection.

### ID SET

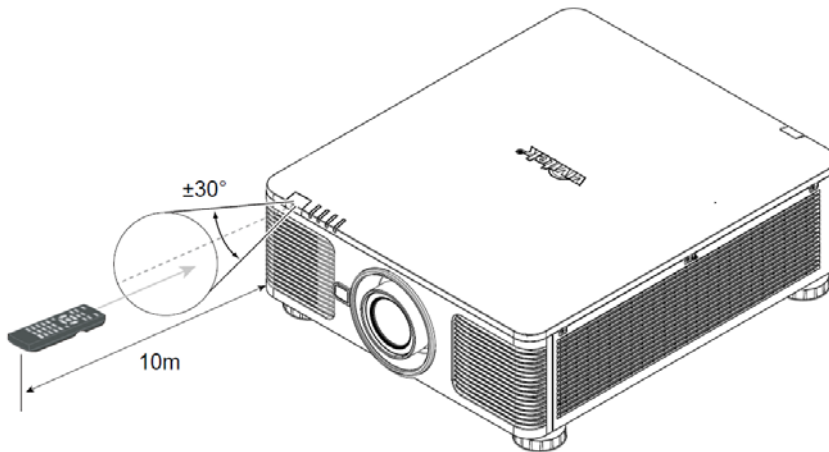
Set up ID number for remote control; refer to the section “Using Control ID for Multi-projector Application” on page 25.

**Wired Remote Jack**

Connect to WIRED REMOTE terminal on the projector

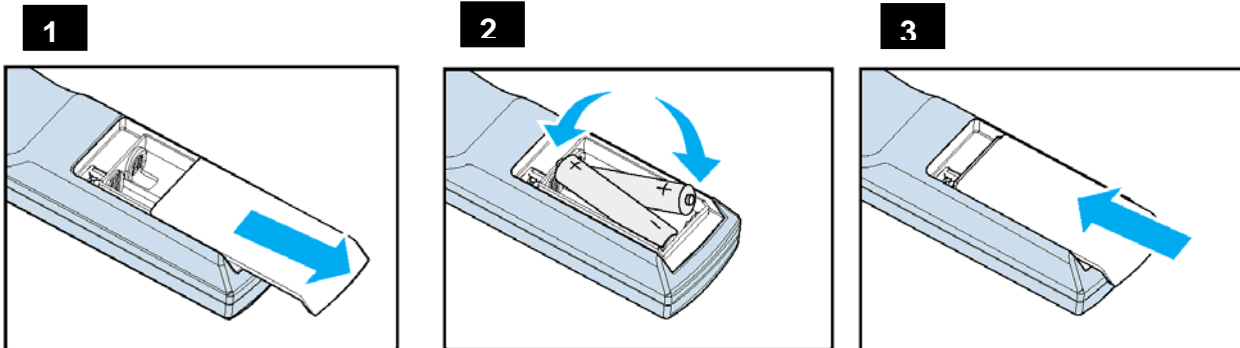
**Remote Control Operating Range**

The remote control uses the infrared transmission to control the projector. It is not necessary to point the remote directly at the projector. Provided you are not holding the remote perpendicular to the sides or the rear of the projector, the remote will function well within a radius of about 10 meters (25 feet) and 15 degrees above or below the projector level. If the projector does not respond to the remote control, move a little closer.



## Installation and Setting up

### Inserting or Changing the Remote Control Batteries



1. Remove the battery compartment cover by sliding the cover in the direction of the arrow.
2. Place two AA batteries with the correct polarity.
3. Slide on the cover as the arrow in the illustration.

**Important:**

- Avoid using the projector with bright fluorescent lighting turned on. Certain high-frequency fluorescent lights can disrupt remote control operation.
- Be sure nothing obstructs the path between the remote control and the projector.
- Do not expose the remote control to high temperature or humidity; otherwise, the remote control will not work functionally.

**Battery installation instructions**

- Make sure the battery is installed with the correct polarity
- Do not use the old and new batteries or the batteries of different types together
- Remove the battery if the remote control may not be used for a long time to prevent the damage caused by leaks.

## Installing the Projector

The high quality display effect can be guaranteed only when the projector is correctly installed. Generally, the light source facing the screen should be reduced or eliminated as much as possible. The contrast of the image will be obviously reduced if the light directly shines on the screen, such as the beam from windows or the searchlight cast on the image. The image may become faded and not bright.

## Precautions for Installation



### Caution:

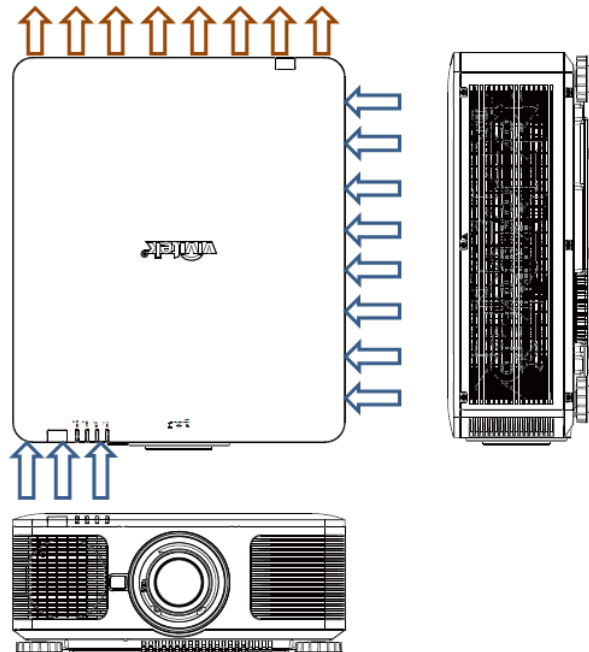
- Projector installation must be done by a qualified professional. Contact your dealer for more information. It is not recommended you install the projector yourself.
- With ceiling installation, use approved mounting hardware & M4 screws; maximum depth of screw: 14 mm. Contact your dealer for information about mounting the projector on a ceiling.
- Only use the projector on a solid, level surface, serious injury and damage can occur if the projector is dropped.



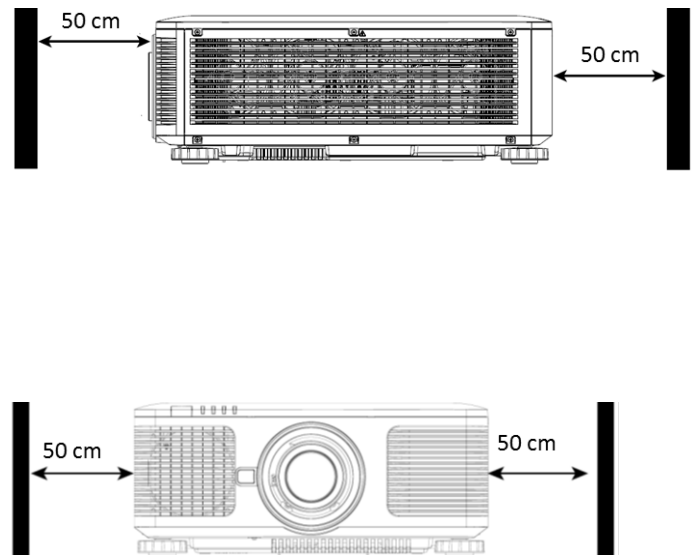
### Caution:

- Ensure that the hot air from the exhaust vent is not sucked into the projector.
- Ensure the air intake and exhaust vents are unobstructed and keep the required distance from any object. Below is required minimum distance between the vent and any object.
- All added enclosures should pass a certified thermal evaluation to ensure that the projector does not recycle exhaust air, as this may cause the projector to shut down even if the enclosure temperature is within the acceptable operation temperature range.

### Airflow and Heat Emission



### Minimum Distance to Vent



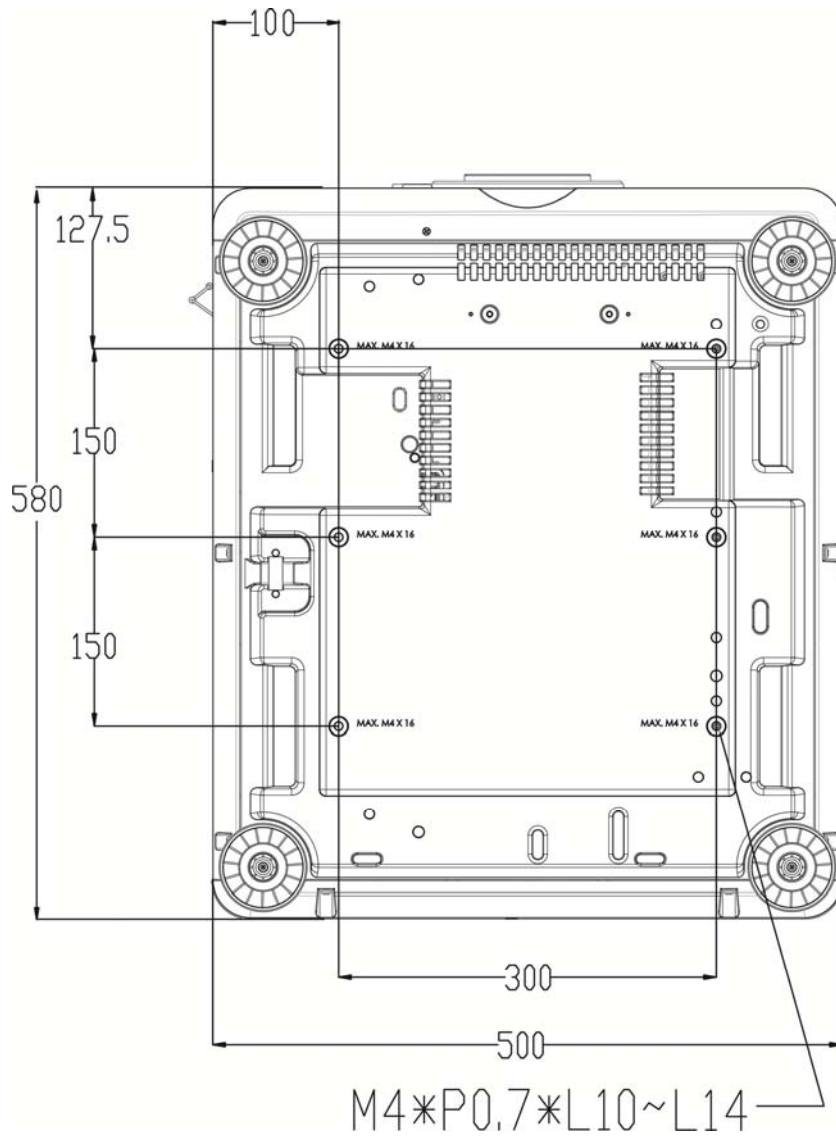
### Caution:

- Only use the projector on a solid, level surface, serious injury and damage can occur if the projector is dropped.
- Please do not stack the projector on the surface of another projector, serious injury and damage may occur if the projector is dropped.



### Mounting the Projector

For mounting the projector, please use UL Listed ceiling mounts and M4 screws, maximum depth of screw: 14 mm.



## Installing or Removing the Optional Lens

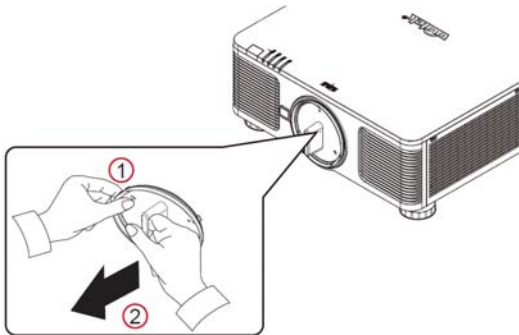


### Caution:

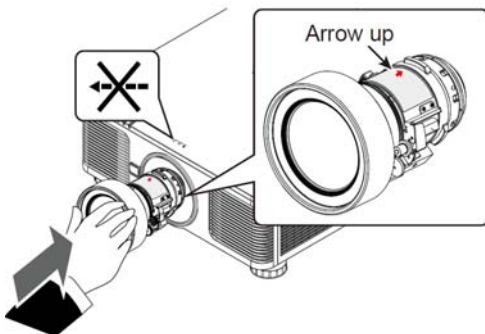
- Do not shake or place excessive pressure on the projector or the lens components as the projector and lens components contain precision parts.
- When shipping the projector with the optional lens, remove the optional lens before shipping the projector. The lens and the lens shift mechanism may encounter damage caused by improper handling during transportation.
- Before removing or installing the lens, be sure to turn off the projector and wait till the cooling fans stop, and turn off the main power switch.
- Do not touch the lens surface when removing or installing the lens.
- Keep fingerprints, dust or oil off the lens surface. Do not scratch the lens surface.
- Work on a level surface with a soft cloth under it to avoid scratching.
- If you remove and store the lens, attach the lens cap to the projector to keep off dust and dirt.

### Install New Lens

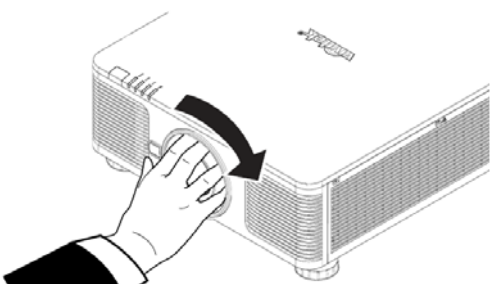
1. If the Lens cover is installed, pull the edge of the lens cover with one hand ( ① ), so that the lens cover can be removed easily with the other hand ( ② )



2. Align the "↑" symbol on the lens label with the "\*" symbol on the top of the body (align to the center of the lens hole) and pull in the lens.

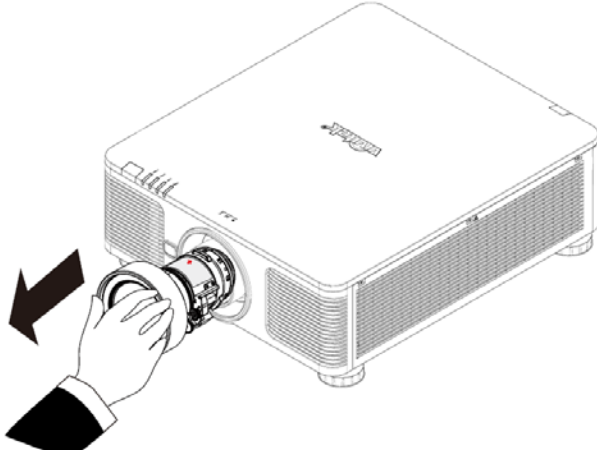


3. Make sure the lens is pushed into the holder and turn it clockwise to the "Lock" position. When turning the lens, the "Click" sounds twice to indicate that the lens is completely fixed.
4. Check if the lens is fixed successfully by pulling the lens out of the holder gently.



### Removing the Existing Lens

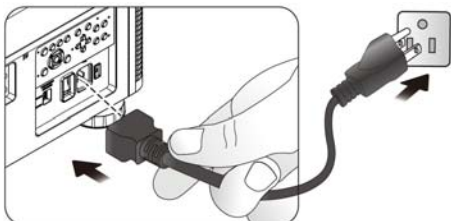
1. Push the LENS RELEASE button all the way in and rotate the lens counterclockwise. The existing lens will be disengaged
2. Pull out the existing lens slowly.

**Note:**

- When installing the lens into the projector, be sure to remove the lens cap from the back of the optional lens before installing the optional lens into the projector. Failure to do so will cause damage to the projector and lens.
- There is one safety switch inside the lens slot on the projector to prevent unexpected injury by laser beam, the projector cannot be turned on if the projection lens has not been installed or is not installed correctly. Please make sure the lens is installed properly before tuning on the projector.

## Connecting to AC Power Supply

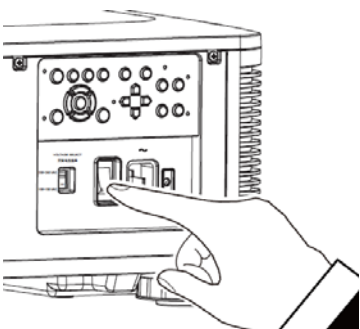
The AC power cord is included in the box; plug the power cord to the AC socket on the IO panel.



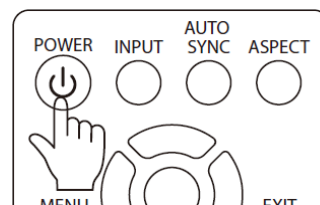
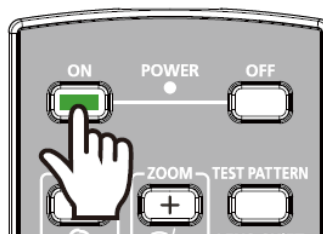
## Turning On the Projector

Once the projector is correctly located and the power cable and other connections are in place, it is important that the projector is powered on correctly in order to avoid damage to components and un-necessary wear and tear. Refer to the following guide to power on the projector.

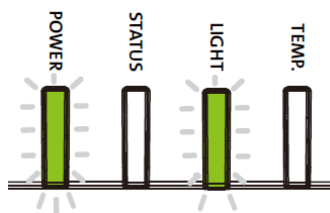
1. Press the main power switch to the on ( I ) position as shown. POWER LEDs flashes then lights red.



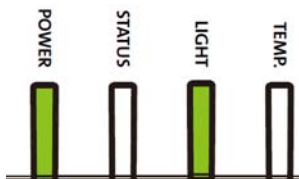
2. Press the POWER button on the control panel or ON button on the remote control.



3. The Power LED and LIGHT LED flashes green till power on process is finished.



4. After few seconds, both LEDs keep green, the projector is ready for use.



## Turning Off the Projector

Once the projector is no longer required, it is important to shut it down correctly to avoid damage or unnecessary wear and tear to the projector.

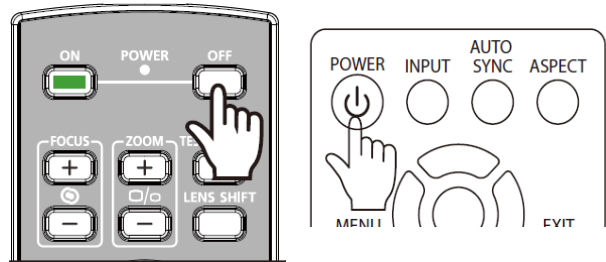


### Note:

- Do not unplug the power cable from the wall outlet or projector when the projector is powered on. Doing so can cause damage to the AC IN connector of the project or the prong plug of the power cable. To turn off the AC power supply when the projector is powered on, use a power strip equipped with a switch and a breaker.
- Do not turn off the AC power supply within 10 seconds after making adjustment or changing the setting. Doing so is possible to cause loss of adjustments and settings and return to default.

Refer to the following guide to shut down the projector.

1. Press the POWER button on the control panel or OFF button on the remote control once, the Power Off window displays.

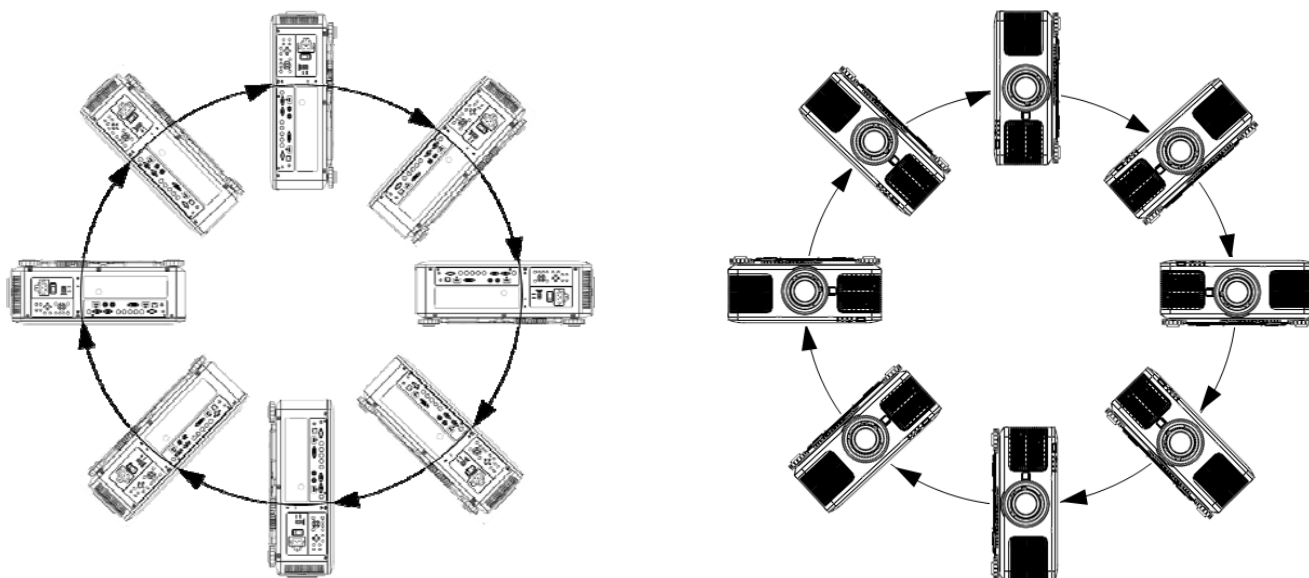


2. Press the POWER button again on the OSD control panel or remote control to verify power off, the power LED flashes orange after Power Off is confirmed.
3. The projector enters Standby mode when the power LED lights red.
4. Press the Main Power switch to the off position (O) to turn off the projector.



### Adjusting the Projection Mode

DU6693Z is designed for set up in all angles including desktop, ceiling, portrait and free-tilt installation as shown in the below illustration.



You can change the direction of the image using the Projection Mode. The projector has a smart cooling mechanism, which regulate the fan automatically according to the projection mode.

PICTURE	SIGNAL	SETUP	INSTALLATION	SERVICE
Projection Mode		Desktop Front		
High Altitude				Off
Standby Mode				Network Standby
Remote Sensor				←/→
Network				←/→
Lens Setting				←/→
Keystone				←/→
Corner Adjustment				←/→
Advanced				←/→

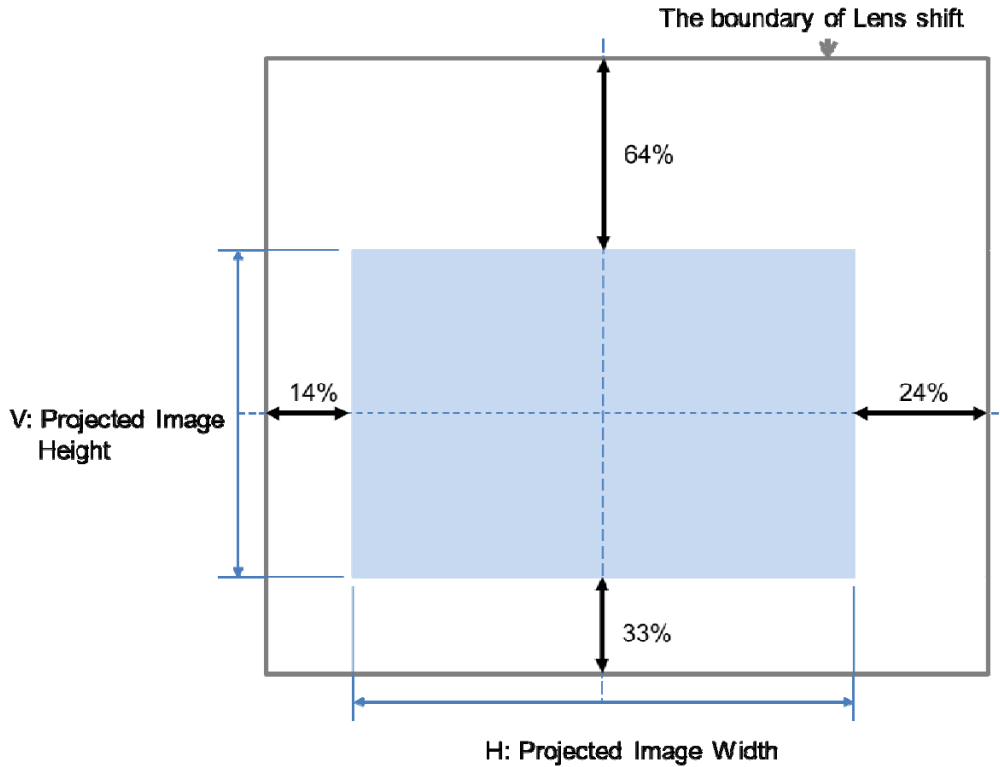
EXIT = Back | Item Adjust ◀▶ | Scroll ▲▼

Use the ◀ or ▶ buttons to select a projection mode to change the direction of the image. The selectable options are as follow:

- Auto-Front:** Turn on the orientation sensor to change automatically the direction of the image.
- Desktop Front:** Install the projector on the desktop and project the image forward.
- Desktop Rear:** Install the projector on the desktop and project the image from the rear of the screen.
- Ceiling Front:** Mount the projector on the ceiling and project the image forward.
- Ceiling Rear:** Mount the projector on the ceiling and project the image from the rear of the screen.

### Adjusting the Projected Image Position

The DU6693Z projector has the powered lens shift feature; the image can be shifted vertically or horizontally without moving the projector. The lens shift range is shown in the percentage of the screen height and width, the maximum vertical shift range can be up to 64% of the projected image height and down to 33% of the height, and maximum horizontal shift range is 24% of the image width to right, 14% of the image width to the left. Please refer to below illustration.



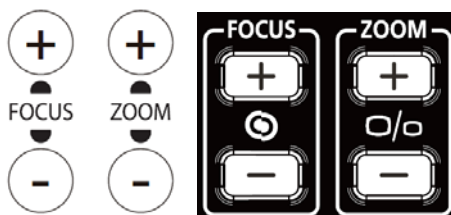
**Note:**

- The projector is equipped with safety switch inside the lens mount hole; the projection lens must be installed in the projector before turning on the power. Or the projection can't be started.
- There is a Lens Lock function on OSD menu to disable lens control adjustment for avoiding possible misoperation after you finish the adjustment, please make sure to disable the lock before performing the lens control.

### Adjusting the Focus and Zoom

The focus and zoom can be adjusted from the projector control panel or remote control. Refer to the following guides to adjust the focus and zoom manually.

Press the Focus or Zoom button on the control key panel or remote control to adjust the focus or zoom effect using the increase and decrease buttons as required



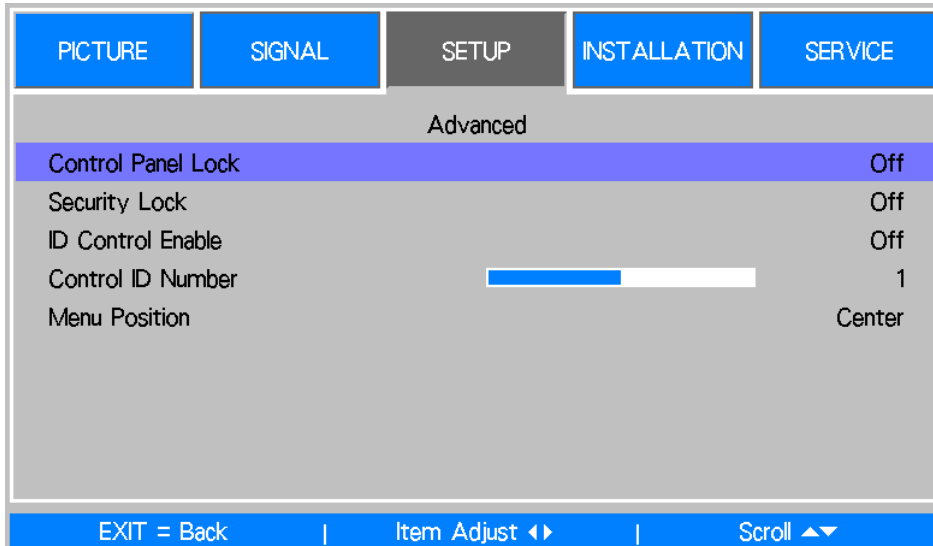
## Preventing the Unauthorized Use of the Projector

### Using the Control Panel Lock

This function allows you to lock control panel on the projector for preventing the unauthorized operation on control button.

#### Locking the Control Buttons

Select SETUP -> Advanced -> Control Panel Lock to enable the function as below illustration.



Once Control Panel Lock is enabled, all of control buttons on the projector are locked. Below message is shown on the screen few seconds if any control buttons is pressed.

Control Panel Lock is turned on

#### Unlocking the Control Panel

Once Control Panel Lock is enabled, all of control buttons on the projector are disabled. Please enter the OSD option SETUP -> Advanced -> Control Panel Lock then select Off to unlock the control panel by remote control.

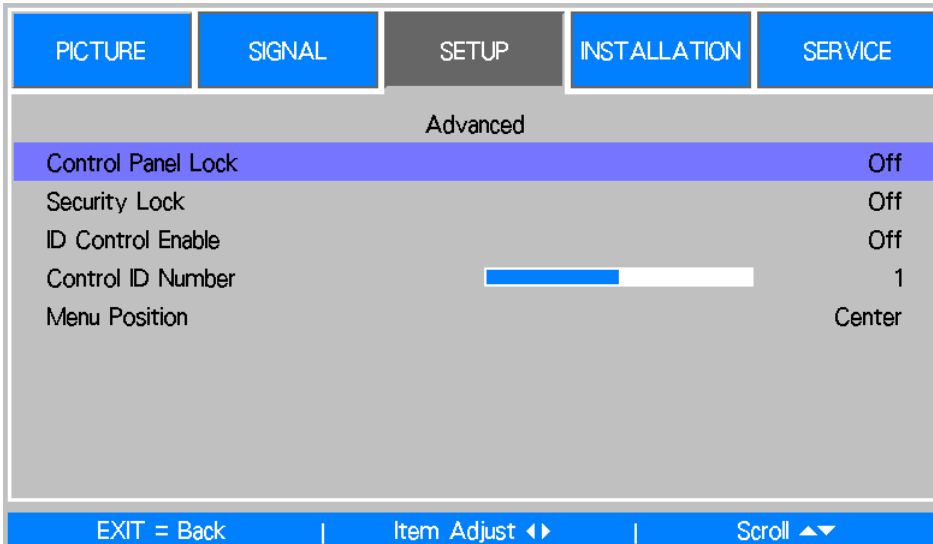


## Using the Security Lock

This function allows you to lock the projector for preventing the unauthorized turning on the projector; the setting is valid when you turn on the projector next time.

### Enable the Security Lock

Select SETUP -> Advanced -> Security Lock then select On to enable the function as below illustration.



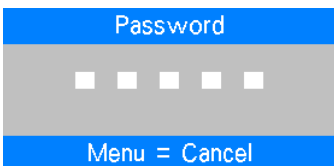
Once Security Lock is turned on, the pop-up message for setting up the password Lock as is shown as below. Press arrow buttons to set up your password, the password can be the combination of four arrow keys.



Control Panel Lock is turned on, the pop-up message will be shown Lock as below, select OK to confirm or Cancel to ignore the setting.



When you turn on the projector next time, the pop-up window will remind you to input the password to start the projection.



### Unlocking the projector

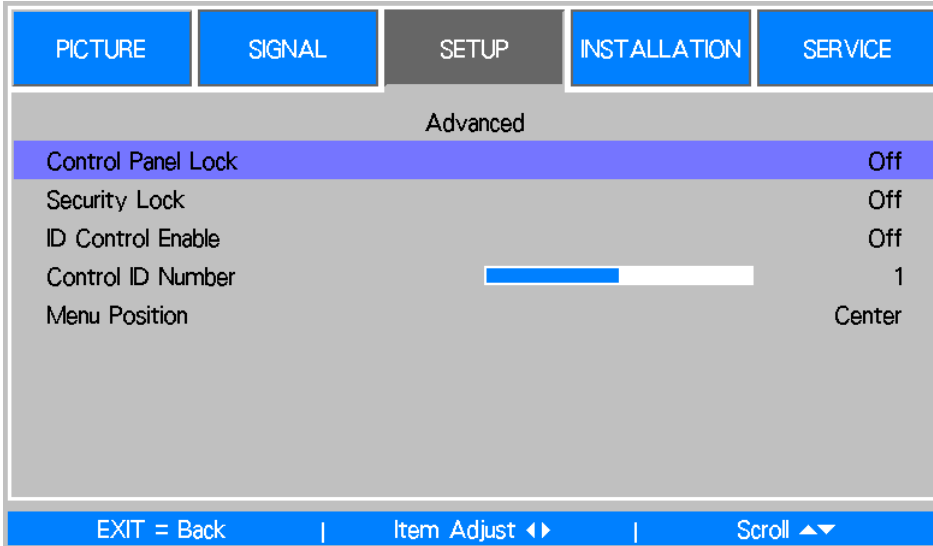
The projector can be unlocked from OSD menu, select SETUP>Advanced>Security Lock to off.

### Using Control ID for Multi-Projector Application

When installing more than one projector in the room, the projectors may receive the control signal at the same time. In this case, you can use control ID function to specify the identification of the projector and remote control to operate the specified projector. Follow below steps to set up the identification number for the projector and remote control.

#### Set the Projector identification number

1. Enable Projector ID Control function from SETUP->ID Control Enable Enable as below figure.



2. Set Control ID Number

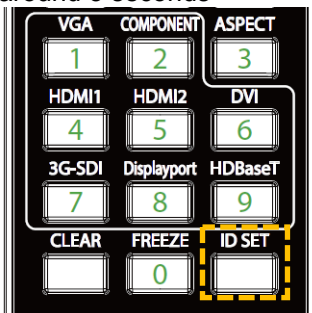
Select Control ID Number option then press Enter buttons, use ▶ button to increase the number or ◀ button to decrease the number. This option is available when Projector ID Control is turned on.



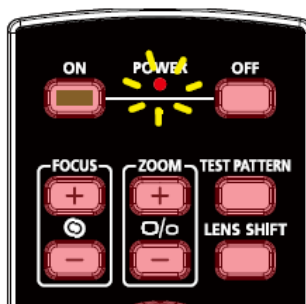
#### Set the identification number of remote control

Press and hold ID SET button on the remote control around 5 seconds, Power led indicator is flashing red periodically. Press two digits to set desired ID number, each pressing shall be leisurely. Power LED will flash on time when the remote control is confirmed the setting.

Press and Hold ID SET button around 5 seconds



Power LED is flashing



Press two digits for ID number



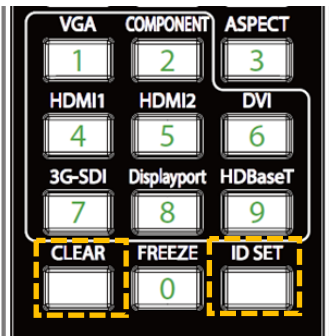
**Note:**

- Set the identification number will overwrite the ID number you set, you can set the ID number directly if you would like to give new ID number for the remote control.

#### Erase the identification number of the remote control

The set ID number is overwritten if new ID number is set, you can press ID SET and CLEAR button to erase ID number of the remote control

Press ID SET and CLEAR buttons simultaneously

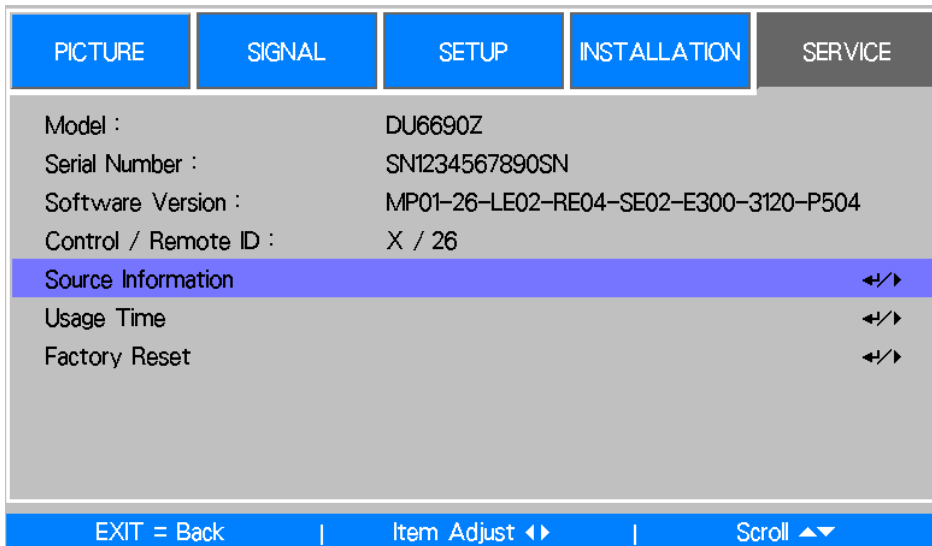


The backlight of the buttons is flashing one time



**Checking the identification number of the projector and remote control**

The identification number of the projector and remote control can be checked by SERVICE menu as below figure, "X" represents that the function is not enabled; the number 26 is the current identification number of the remote control



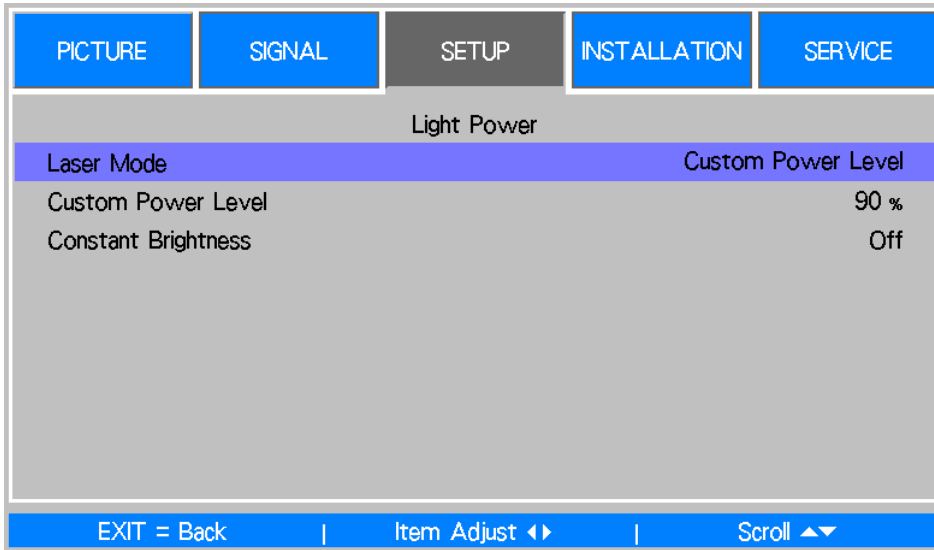
**Note:**

- Project ID Control function is available when the option is turned on and remote control wire is not plugged into the wire remote jack.
- If ID Control Enable is set to Off, projector can receive any control signal from the remote control even ID number is set into the remote control.

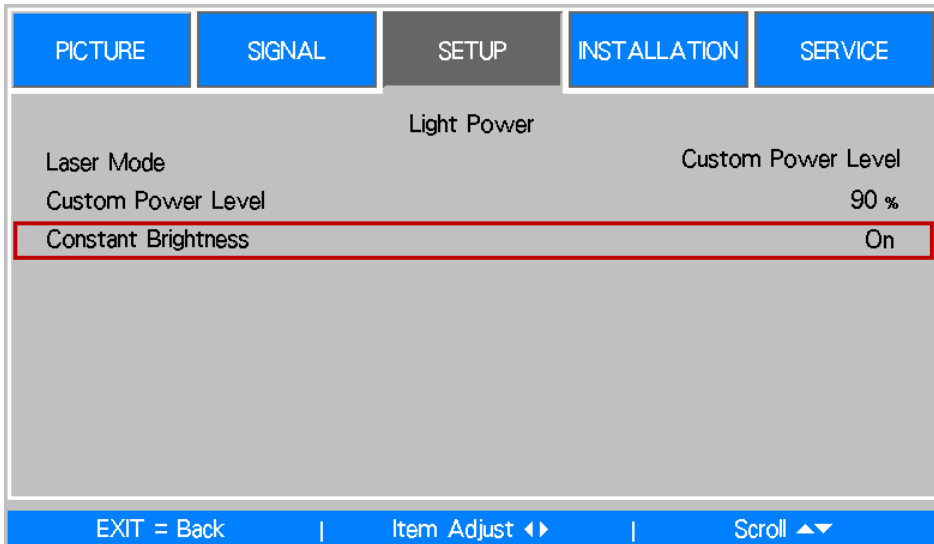
## Using the Constant Brightness Function to Maintain the Brightness Output

The brightness output of a projector may decline after thousands of hours of usage. In certain applications, such as mapping, a periodical adjustment to multiple projectors is required to ensure the overall image result. Vivitek’s Constant Brightness feature is designed to reduce the need for installers to regularly recalibrate the projectors. A built-in light sensor inside the projector monitors the level of light so that when a reduction in light is detected, the projector will regulate dynamically the electricity power to increase the light output to your pre-defined brightness level, and thus maintaining a constant level of brightness. To use this function, follow the steps below:

1. Select CONTROL > Light Power > Laser Mode. Change it to Custom Power Level with a value under 100%. For example: 90% or 85%. The reduced power percentage will be used to later regulate the brightness when the Constant Brightness function is enabled.



2. Enable the Constant Brightness function.



**Note:**

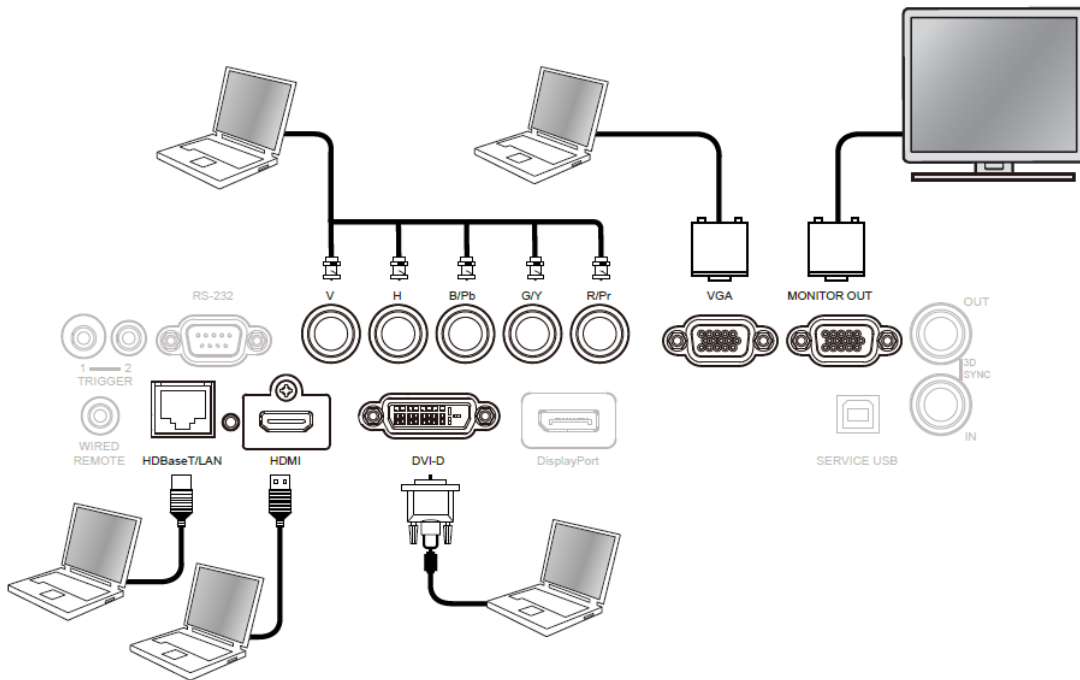
- After a long period of time, when a power boost reaches its limit of maximum power, the Constant Brightness function will no longer increase the electrical power to the laser light source. In this case, please turn off the function. Or you can readjust all the projectors to a new level of brightness with a lower percentage of Custom Power Level so that the Constant Brightness function will work again.

## Connecting Equipment

Follow the instructions below to connect DU6693Z projector to the video source, external control equipment (if any). When connecting to the equipment, use the correct signal cable to connect to the signal source and ensure that the cable is securely connected. Fasten the nut on the joint and connect the signal source equipment to the projector according to the figure below.

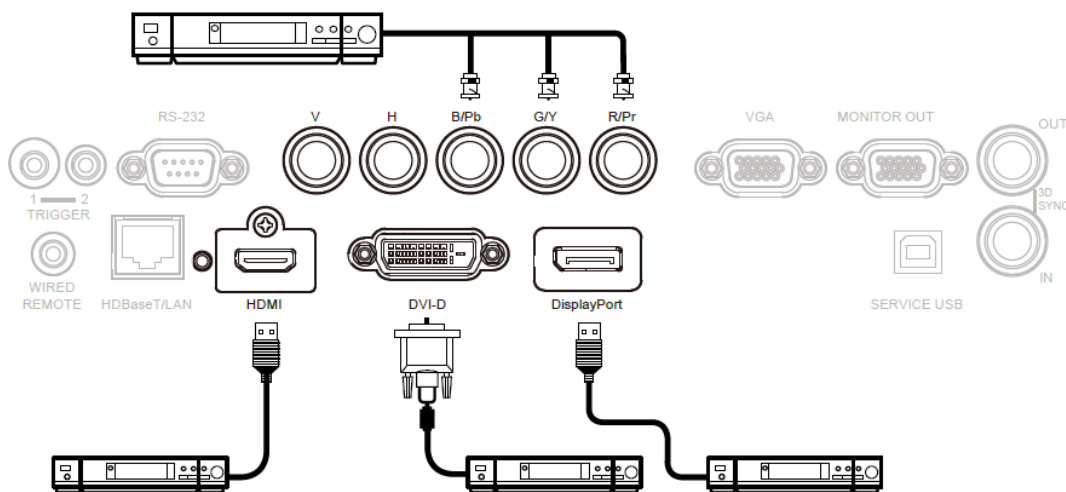
### Connecting a Computer

You can connect the PC signal to be projected to the projector through the DVI-D, HDMI, DisplayPort, VGA or RGBHV (BNC) cable. If the signal to be input is VGA signal, connect the VGA cable to the external display to simultaneously monitor the projected content.



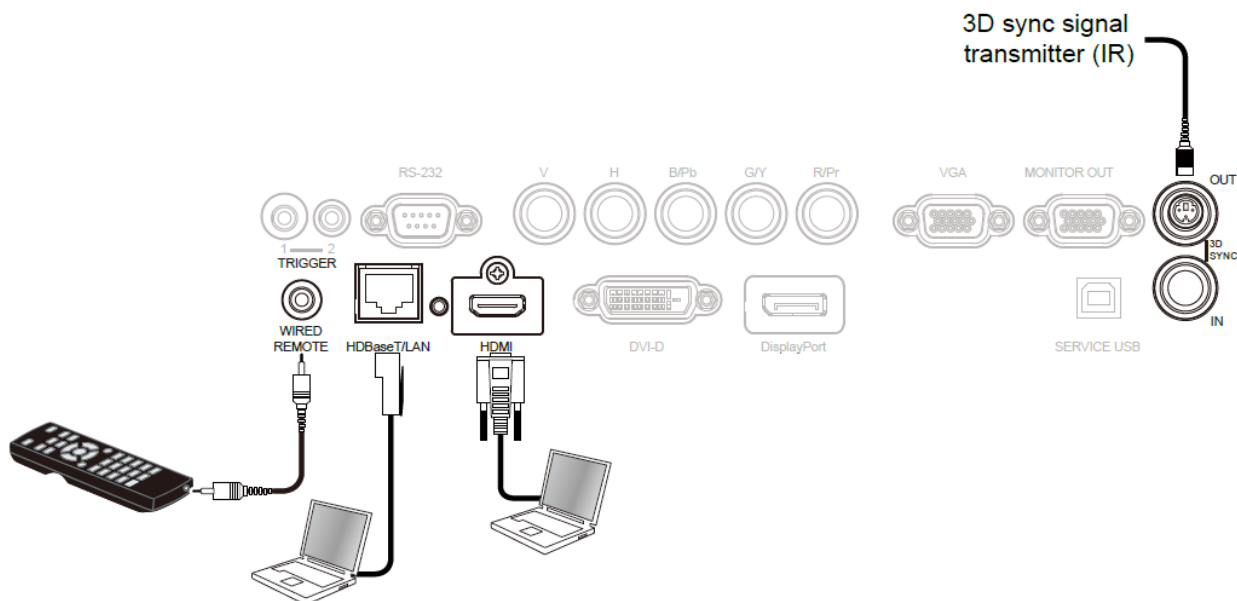
### Connecting a Video Device

Connect a video equipment to the input port of the projector via the DVI-D, HDMI, DisplayPort and Component Video Connector.



## Connecting a Control Equipment

The projector has the following control ports for connecting to the control equipment:



**HDBaseT/LAN (Network control):** The projector supports network control. LAN and HDBaseT share the one port. If only network control is used, you can connect the LAN on the projector to PC or through the local network. Refer to the Remote Communication Manual for detailed information.

**RS-232 (RS-232 control):** The projector can be remote-controlled by connecting the projector to PC or control system through the standard 9-pin serial cable (Straight Through Serial Cable). Refer to the Remote Communication Manual for detailed information.

**Wired remote control:** If the projector cannot receive the IR signal from the remote control due to the overly long distance or obstacles, you can connect the cable to the IR remote control or the external IR transmitter (optional) via the WIRE input port to expand the working range of the remote control.

**3D Sync Out/In:** Connect to 3D IR sync signal transmitter or device.

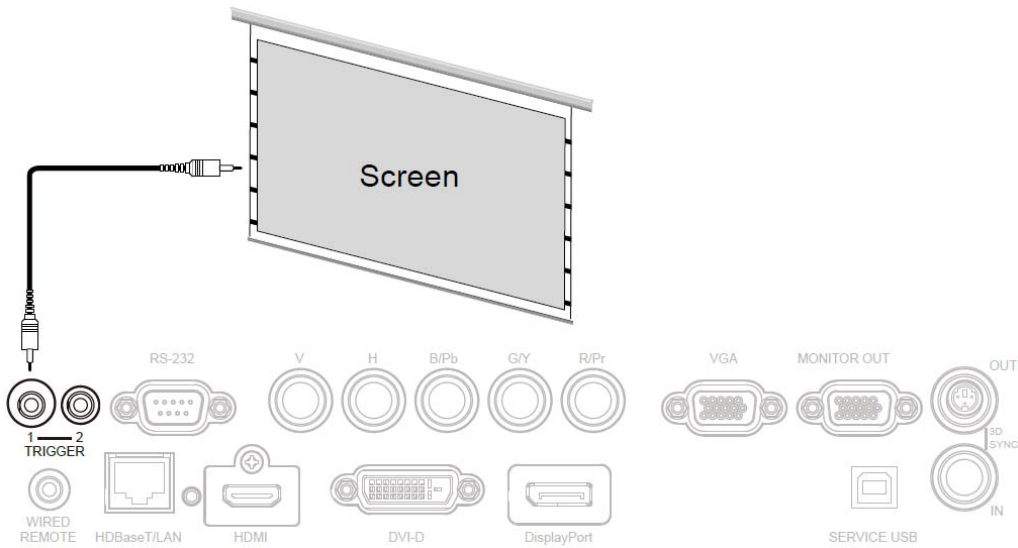


### Caution:

- When the terminal of the remote control cable is inserted to the wired control terminal of the projector, the projector will automatically switch to the wired control mode and cannot be controlled through the IR signal of the remote control. Disconnect the wired control terminal on the projector if you want to control through the IR signal of the remote control.
- If the wired remote control cable or the external IR transmitter is inserted to the incorrect port, such as Trigger, the remote control or the IR transmitter may be damaged. Make sure whether the port is correct.

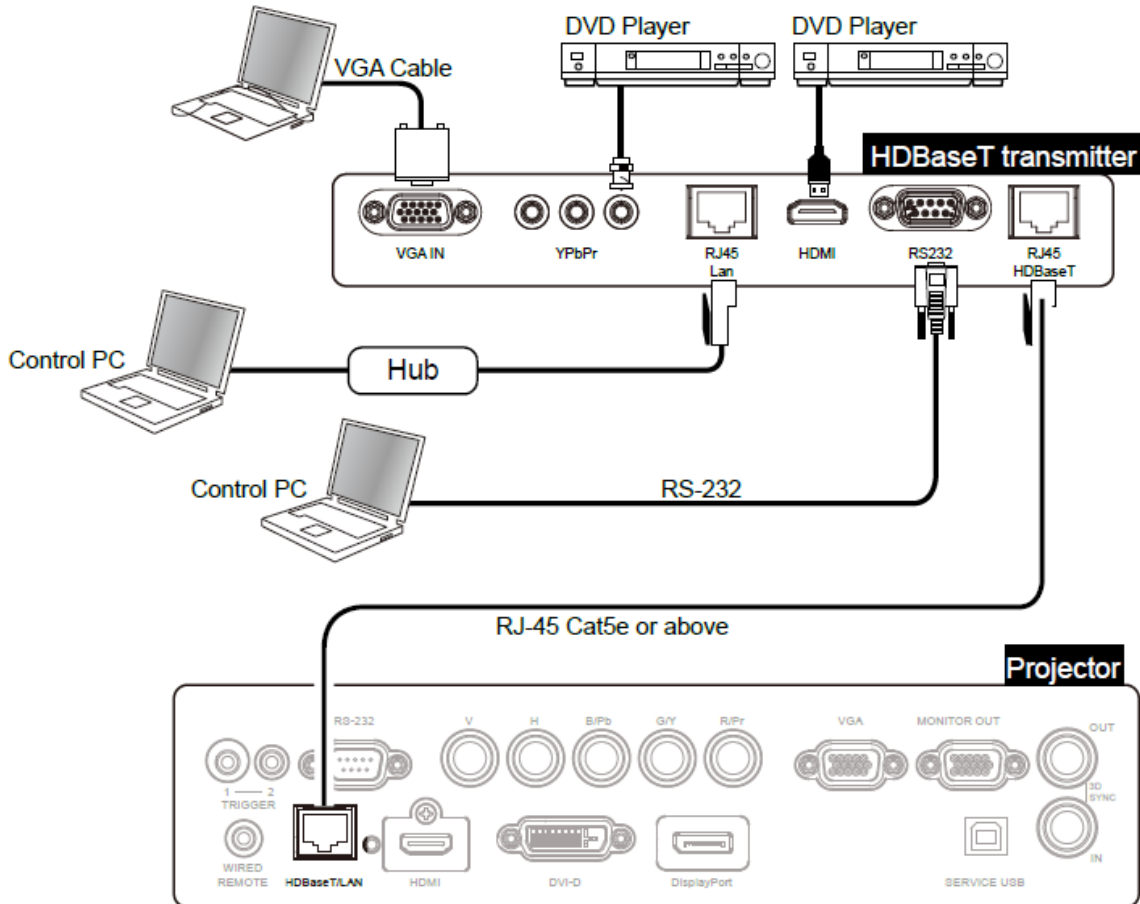
### Connecting a Screen Trigger

If your projection system includes the electric projection screen and other 12V trigger device, you can connect these devices to the 12V trigger to output and configure the output 12V signal settings. The projector will output 12V signals when it's turned on. You can use the signal to control the screen or device by turning on the OSD option under SETUP -> Trigger 1 or Triger 2.



## Connecting an HDBaseT Transmitter

The projector has a built-in HDBaseT receiver. With HDBaseT Transmitter (Not supplied), the video, RS-232 and LAN signals can be sent to the projector via a single RJ-45 cable. If the HDBaseT Transmitter you purchased supports the input and output of the IR remote control, the control signals from the IR remote control can be sent to the DU6693Z projector via the RJ-45 cable.



### Note:

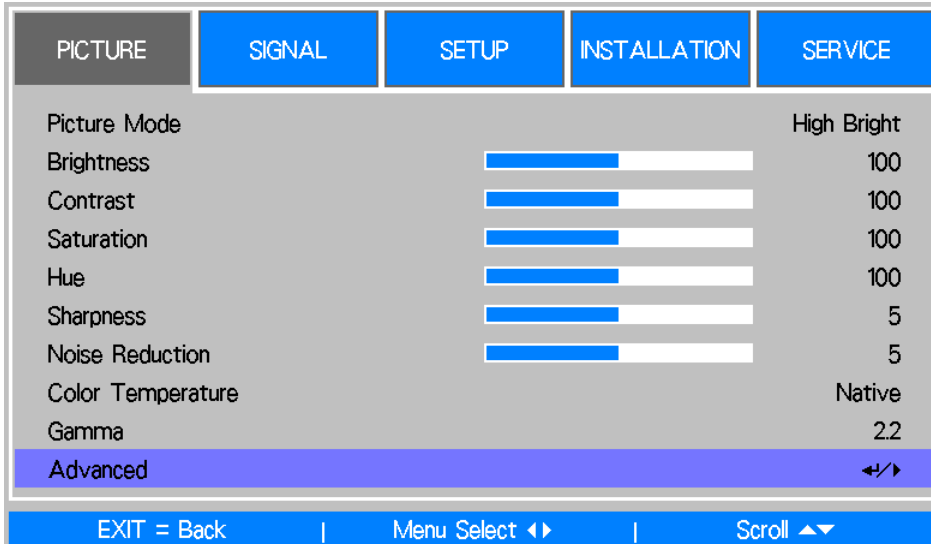
- The projector supports the video signal, R-232, IR remote control and the reception of the network control signals but do not support Power over Ethernet (PoE).
- The baud rate will be switched to 9600 automatically. If RS232 command is sent via external HDBaseT transmitter.
- If the command is sent via the HDBaseT transmitter, the longest transmission distance is 100 meters. The projection may be interrupted or interfered, or the control signal cannot be sent if the transmission distance is exceeded.
- Use the RJ-45 Cat5e or above cable and avoid entwining. Entwining may cause damage or interfering signal transmission, reduce the transmission distance and degrade the image quality.



## Using the Projector

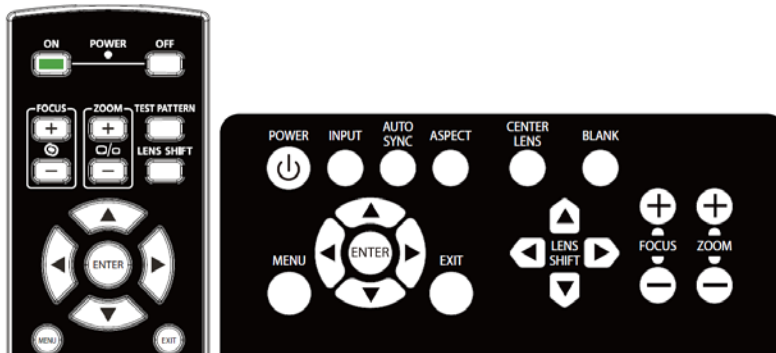
### Using the On-Screen Display

The projector has an On-Screen Display (OSD) that lets you make image adjustments, change various settings and check current projector status.



### Navigating the OSD

You can use the remote control or the control buttons on the projector to navigate and make changes to the OSD. The following illustration shows the corresponding buttons on the remote control and on the projector



1. To open the OSD, press the **Menu** button on the OSD control panel or remote control. There are five folders on the menu. Press the cursor ◀ or ▶ buttons to move through secondary menus.
2. Press ▲ or ▼ to select menu items and ◀ or ▶ to change values for settings. Press ← to confirm the new setting.
3. Press **RETURN** to leave a submenu or MENU to close menu



### OSD Menu Tree

Use the following table to quickly find a setting or determine the range for a setting.

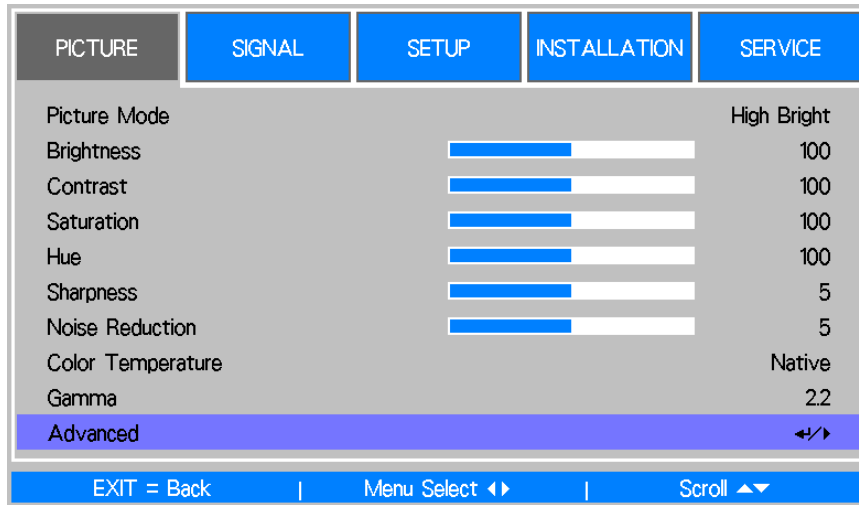
Main Menu	Submenu				
Picture	Picture Mode	High Bright			
		Presentation			
		Video			
	Brightness	Brightness			
		Contrast			
		Saturation			
		Hue			
		Sharpness			
		Noise Reduction			
		Color Temperature	Native		
	Gamma	Gamma	5400K		
			6500K		
			7500K		
			9300K		
			1.0		
			1.8		
			2.0		
			2.2		
			2.35		
			2.5		
	Advance	S Curve	S Curve		
			DICOM		
			DICOM		
Input Balance		Input Balance	Red Offset		
			Green Offset		
			Blue Offset		
			Red Gain		
			Green Gain		
			Blue Gain		
			HSG	Red	Hue/Saturation/Gain
			HSG	Green	Hue/Saturation/Gain
			HSG	Blue	Hue/Saturation/Gain
	HSG		Cyan	Hue/Saturation/Gain	
HSG	Magenta	Hue/Saturation/Gain			
HSG	Yellow	Hue/Saturation/Gain			
HSG	White	Hue/Saturation/Gain			
HSG	Reset				
Signal	Input Selection	HDMI I			
		DisplayPort			
		DVI-D			
		VGA			
		Component/BNC			
	EDID Mode	EDID Mode	HDBaseT		
			HDMI I		
			DisplayPort		
	Auto Search	Auto Search	DVI-D		
			VGA		
	Color Space	Color Space	HDBaseT		
			Off		
On					
Auto					
YPbPr					
Aspect Ratio	Aspect Ratio	YCbCr			
		RGB-PC			
		RGB-Video			
Aspect Ratio	Aspect Ratio	5:4			
		4:3			
		16:10			

Main Menu	Submenu		
		16:9	
		1.88:1	
		2.35:1	
		Letterbox	
		Auto	
		Native	
	Overscan	Off	
		On	
	Background	Logo	
		Black	
		Blue	
	Test Pattern	Crosshatch	
		Color Bar	
		Checker Board	
		V Burst	
		H Burst	
		White	
		Black	
		Red	
		Green	
		Blue	
	VGA Setup	H Total	
		H Start	
		V Phase	
		V Start	
	Auto Sync	Execute	
Setup	Language	English	
		Français	
		Español	
		Deutsch	
		Português	
		简体中文	
		繁體中文	
		日本語	
		한국어	
	Light Power	Laser Mode	Normal
			Eco
			Custom Power Level
		Custom Power Level	
		Constant Brightness	Off
			On
	Startup Logo	On	
		Off	
	Digital Alignment	Digital Zoom	
		Digital Pan	
		Digital Scan	
		Reset	
	Trigger 1	On	
		Off	
	Trigger 2	On	
		Off	
	Dynamic Black	On	
		Off	
	3D	3D Format	Off
			Auto
			Side by Side
			Top/Bottom
			Frame Sequential
		DLP Link	On

Main Menu	Submenu		
			Off
		Eye Swap	Normal
			Reverse
		3D 24Hz Display	96Hz
			144Hz
		Sync Delay	
		Sync Reference	Internal
			External
	Advanced	Control Panel Lock	On
			Off
		Security Lock	On
			Off
		ID Control Enable	Off
			On
		Control ID Number	
		Menu Position	Top Left
			Top Right
			Bottom Left
			Bottom Right
			Center
Installation	Projection Mode	Auto-Front	
		Desktop Front	
		Desktop Rear	
		Ceiling Front	
		Ceiling Rear	
	High Altitude	Sea Level	
		A1 (4000ft/1219m)	
		A2 (8000ft//2438m)	
	Standby Mode	Network Standby	
		Eco	
	Remote Sensor	Front/Rear	
		Front	
		Rear	
		HDBaseT	
		Off	
	Network	IP Address	
		Subnet Mask	
		Gateway	
		DNS	On/Off
		DHCP	
		Apply	
		Mac Address	
	Lens Setting	Lens Lock	Off
			On
		Lens Control	Zoom
			Focus
			Lens Shift
			Shift V
			Shift H
		Lens Type	Non-UST Lens
			UST Lens
		Center Lens	Yes
			No
		Lens Memory	Memory 1-10
	Keystone	H Keystone	
		V Keystone	
		Reset	
	Corner Adjustment	Top Left Corner	
		Top Right Corner	
		Bottom Left Corner	

Main Menu	Submenu	
	Advanced	Bottom Right Corner RS-232 Baud Rate 38400 19200 9600 Chanel Local HDBaseT Auto Power Off Auto Power On Message Box Screen Format 16:10 16:9 4:3 H/V Alignment H Zoom V Zoom H Shift V Shift Reset
SERVICE	Model Serial Number Software Version Control / Remote ID Source Information Usage Time Factory Reset	X / X Active Source Pixel Clock Signal Format H/V Refresh Rate Sync Type Sync Polarity Scan Type Laser Time Power On Time

## OSD Operation - PICTURE



### Picture Mode

Use ◀ or ▶ buttons to select a set of preset picture mode

**High Bright:** The highest brightness output mode is suitable for the occasion where high brightness is needed.

**Presentation:** The best image effect is suitable for the presentation or picture.

**Video:** The best color mode is suitable for play of the video.

### Brightness

Use ◀ or ▶ buttons to increase or decrease the brightness of the image.

### Contrast

Use ◀ or ▶ buttons to adjust the contrast of the projected image.

### Saturation

Use ◀ or ▶ buttons to adjust the saturation level of the color (the higher the level, the higher the saturation).

### Hue

Use ◀ or ▶ buttons to adjust the level of hue for reproduction of the true color.

Main Color	Hue		
R	Magenta	↔	Yellow
G	Yellow	↔	Cyan
B	Cyan	↔	Magenta
C	Green	↔	Blue
M	Blue	↔	Red
Y	Red	↔	Green

### Sharpness

Use ◀ or ▶ buttons to adjust the sharpness. The purpose of this adjustment is to change the value of the high-frequency detail.

### Noise Reduction

Use ◀ or ▶ buttons to adjust the noise of the projected image. This function is suitable for removing the noise of the image in interlaced scanning input. Generally, noise reduction can lower the value of the high-frequency detail and make the image softer.

### Color Temperature

Use ◀ or ▶ buttons to adjust the color temperature of the projected image, the option can be 5400K, 6500K, 7500K, 9300K and Native.

**Gamma**

When the ambient light is too bright and may affect the display of the details in the darker area of the image, you can select from the following gamma options to adjust the chrominance of the image, the selectable options are 1.0, 1.8, 2.0, 2.2, 2.35, 2.5, S-Curve and DICOM.



**Note for DICOM:**

- The DICOM option under this function can be used to enhance gray scale level for viewing grayscale medical images, such as X-rays for training and educational purposes.
- The projector is not a medical equipment and cannot be used for medical diagnosis

**Advanced**

PICTURE	SIGNAL	SETUP	INSTALLATION	SERVICE
Advanced				
Input Balance				←/→
HSG				←/→

**Input Balance**

There are two options to fine tune Red, Green and Blue color

**Offset:** These three options will shift the color spectrum for the whole image and change its brightness, if minimal amount of red, green or blue appears in the gray areas, you can adjust the offset of the corresponding color accordingly. By increasing the offset, the image brightness will become lower.

**Gain:** These three options are used to increase or decrease the range of color input for the entire image. If minimal amount of red, green or blue appears in the gray areas, lower the gain of the corresponding color accordingly. As gain increases, the contrast of the image will become lower.

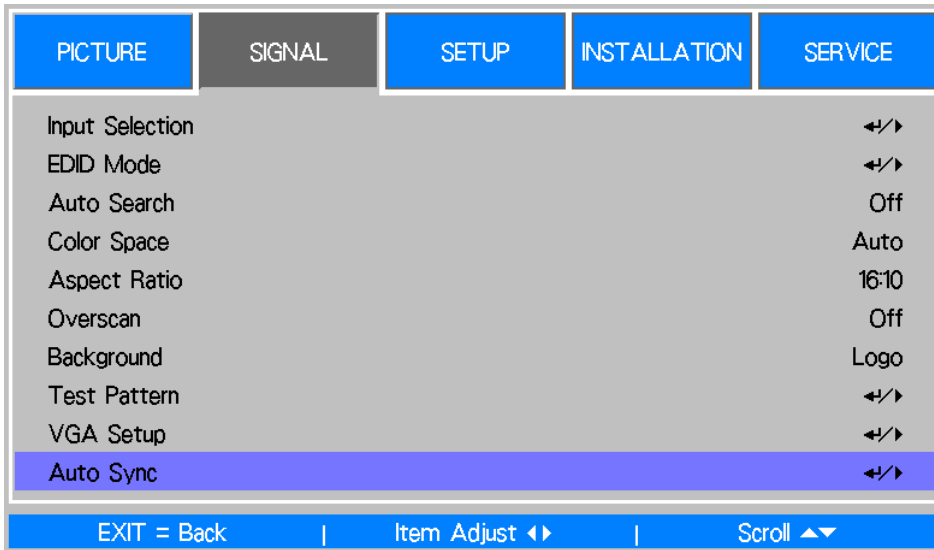
PICTURE	SIGNAL	SETUP	INSTALLATION	SERVICE
Advanced \ Input Balance				
Red Offset				100
Green Offset				100
Blue Offset				100
Red Gain				100
Green Gain				100
Blue Gain				100
EXIT = Back   Item Adjust ◀▶   Scroll ▲▼				

**HSG**

HSG is a function to adjust Hue, Saturation and Gain independently, it allows for specified color adjustments that are more intuitive. You can adjust Hue, Saturation and Gain for Red, Green, Blue, Cyan, Magenta, Yellow and white independently.

PICTURE	SIGNAL	SETUP	INSTALLATION	SERVICE
Advanced \ HSG \ Red				
Hue				100
Saturation				100
Gain				100

**OSD Operation - SIGNAL**



**Input Selection**

This function is same as the shortcut key on the remote control. You can use the remote control or this function to select the correct input source.

**HDMI**

Select the input source from the HDMI.

**DisplayPort**

Select the input source from the DisplayPort.

**DVI-D**

Select the input source from the DVI-D.

**VGA**

Select the input source from the VGA.

**Component / BNC**

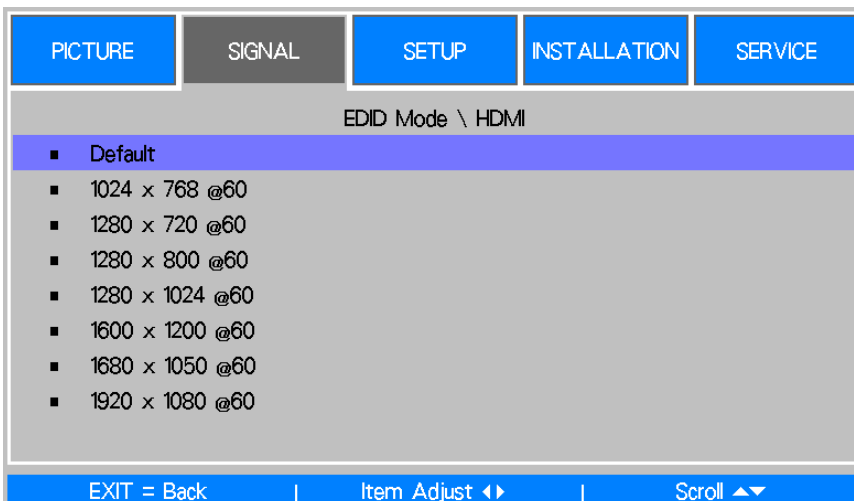
Select the Input source from the BNC. The input source can be RGBHV or Component signal from computer or component video enabled device.

**HDBaseT**

Select the input source from the HDBaseT.

**EDID Mode**

Sometimes the projector may not display the desired timing due to the compatibility of the device; you can use this function to select the desired timing for projection. The preferred timings are listed by input source, you can use ▲ or ▼ buttons to select preferred timing for projection or select the timing automatically by setting it to Default.





### **Auto Search**

Use the ◀ or ▶ buttons to turn on/off Auto Search for the input source.

### **Color Space**

This function allows you to change the corresponding color space for the input signal. In most cases, the correct color space can be selected automatically by Auto mode. If the selection is not correct, you can use a specific color space forcibly by selecting one of the following options:

**Auto:** The projector detects the input signal and switches to the corresponding color space automatically.

**YPbPr:** Set the color space to ITU-R BT.601.

**YCbCr:** Set the color space to ITU-R BT.709.

**RGB-PC:** Use the RGB color space and set the black to 0, 0, 0 RGB while set the white to 255, 255, 255 RGB (if an 8-bit image is used).

**RGB Video:** Use the RGB color space and set the black to 16, 16, and 16 RGB while set the white to 235, 235, 235 (if an 8-bit image is used) to correspond to the luminance value defined in the digital component standard.

### **Aspect Ratio**

This function allows the user to adjust the aspect ratio of the image.

### **Overscan**

Noise may appear on the edge of the projected image, use this function to select Crop to hide the edge of the image or Off to display the original image.

### **Background**

Use this function to specify the image to be displayed on the screen when no signal is input. You can select the Logo, Blue or Black.

### **Test Pattern**

The built-in image is provided for installation and adjustment. You can select Test Pattern on OSD or the TEST PATTERN button on the remote control to display the test pattern menu, use ◀▶ or ▲▼ to select desired test pattern.

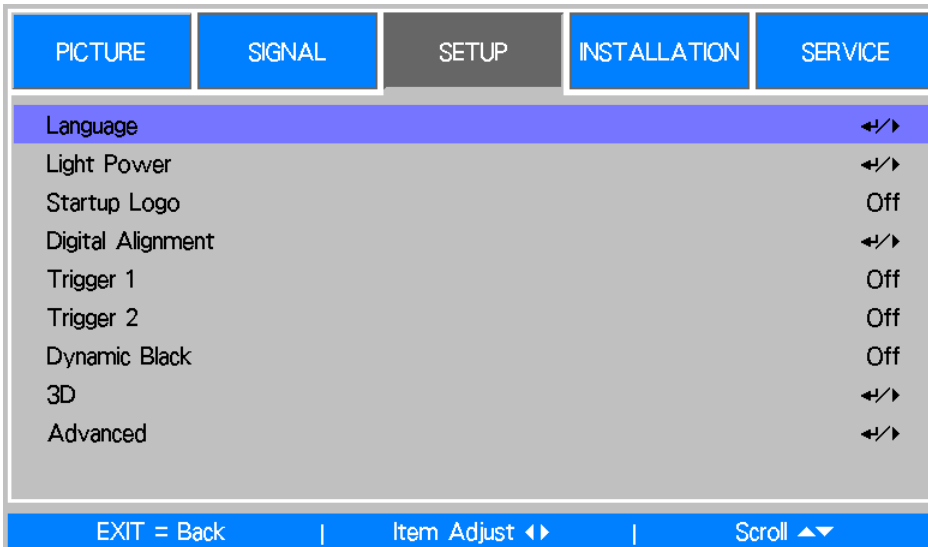
### **VGA Setup**

Set the H Total, H Start, H Phase and V Start for the VGA signal display.

### **Auto Sync**

You can use this function to set auto synchronization for the input signal.

## OSD Operation - SETUP

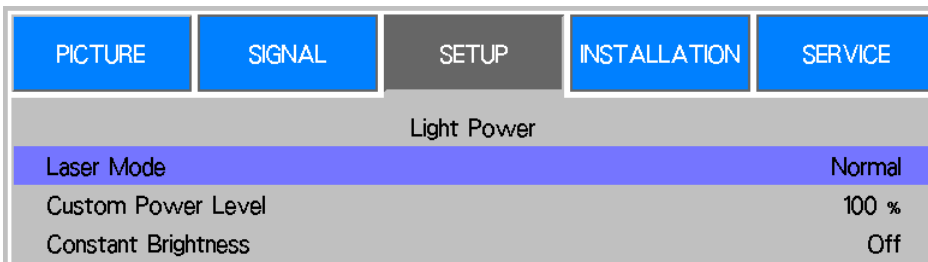


### Language

Select the OSD Menu language. English, French, Spanish, Deutsch, Portuguese, Simplified Chinese, Traditional, Japanese and Korean.

### Light Power

There are three options under Light Power for adjusting or fine turning the light power to set the desired brightness output.



**Laser Mode:** Use the ◀ or ▶ buttons to select the Eco, Normal or Custom Power Level mode.

**Eco:** Projector operates in the energy-saving mode, which is equivalent to 80 % power of light source.

**Normal:** Projector operating with normal light power can obtain the brightest projection display.

**Custom Power Level:** User can enable the custom power level mode.

**Custom Power Level:** Select this function and use the ◀ or ▶ buttons to adjust light power to between 100% and 35%. Note: this function is enabled only when Laser Mode is set to the Custom Power Level.

**Constant Brightness:** Select On to enable this function. A built-in light sensor inside the projector monitors the level of light so that when a reduction in light is detected, the sensor will regulate dynamically the electricity power to increase the light output to your pre-defined brightness level, and thus maintaining a constant level of brightness.

To enable this function, first in the SETUP -> Light Power -> Laser Mode, enable the Customer Power Level. Second, in the SETUP -> Light Power -> Custom Power Level, select a value under 100%. Then turn the Constant Brightness function to On to enable it.



**Note:**

- This function is only enabled when the Customer Power Level is set at less than 100%. The reduced power percentage will be used to later regulate the brightness when the Constant Brightness function is enabled.

### Startup Logo

Use the ◀ or ▶ buttons to turn on/off the Startup Logo.

### Digital Alignment

Select this function to enlarge the projected image.

**Digital Zoom:** Use ◀ or ▶ buttons to enlarge the projected image.

**Digital Pan:** Use ◀ or ▶ buttons to move the projected image horizontally. This function is only available when the projected image is enlarged.

**Digital Scan:** Use ◀ or ▶ buttons to move the projected image vertically. This function is only available when the projected image is enlarged.

**Reset:** Set the Digital Alignment back to the factory default value.

### Trigger 1, 2

The projector is provided with a set of trigger output. User can connect the trigger to the screen with projector by the cable. If user does so, once the projector is powered, the screen would be automatically turned on as well. There is a 2-3 second delay to activate this function.

### Dynamic Black

This is function can be used to enhance the black level of the projected image, set it to on to activate the dynamic black shutter, otherwise, set it to off to disable it.

### 3D

**3D Format:** Select this option and press the Enter button to enable 3D replay and set 3D option.

**Off:** Turn off the 3D Display Mode. When Auto, Side by Side, Top/Bottom or Frame Sequential is selected, the 3D mode will be turned on. To turn off the 3D Mode, select "Off" and press the Enter button.

**Auto:** Enable the 3D format to automatically detect the formats of Side by Side, Top/Bottom and Frame Sequential. This function may only be enabled for the input signal below

- The input signal is HDMI 1.4 3D.

- The HDMI 1.4 3D signal connects to the projector through HDBaseT transmitter.

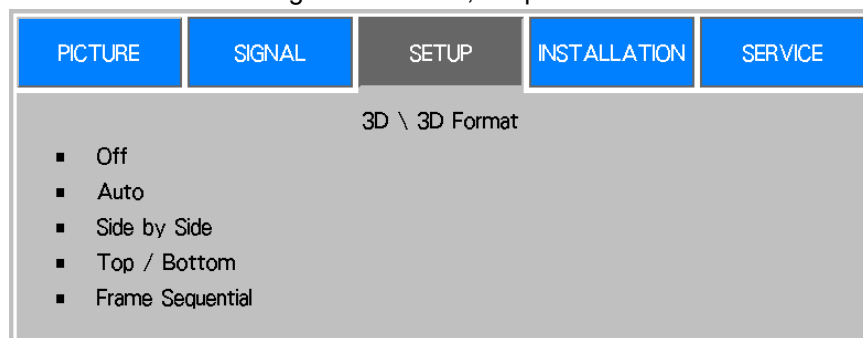
**Side by Side:** Manually switch the 3D Format to Side by Side. This option is only applicable to the HDMI input signal or the signal through a HDBaseT transmitter

**Top/Bottom:** Manually switch the 3D Format to Top/Bottom. This option is only applicable to the HDMI input signal or the aforementioned signal sent through the HDBaseT transmitter.

**Frame Sequential:** Set the format to Frame Sequential.

**DLP Link:** Set to activate or deactivate the DLP Link sync signal.

**Eye Swap:** If the 3D imaged viewed through the 3D glasses for the left and right eyes are inverse, set the Eye Swap to "Reverse". If the images are normal, keep the current.



**3D 24Hz Display:** Set the 3D 24Hz image frame rate to 144fps or 96fps, this option is only applicable when the input signal is 24Hz.

**Sync Delay:** Manually switch the Dark time for glasses tolerance.

**Sync Reference:** The projector provides DLP Link and 3D IR sync for 3D display; you can specify the built-in DLP Link or external 3D IR transmitter to synchronize the signal of the 3D glasses. This function is only applied to the condition that 3D Format is Frame Sequential or external 3D sync device is connected to the projector.

**External:** Signal is sent from external 3D sync signal receiver.

**Internal:** Signal is sent by the projector, 3D sync signal is DLP Link.



- The projector provides DLP Link and 3D IR sync. After the 3D Mode is enabled, the built-in DLP Link or external 3D IR transmitter can be used to synchronize the signal of the 3D glasses. Or, you may turn off the DLP Link sync signal and only select the external 3D IR transmitter to synchronize the 3D signal.

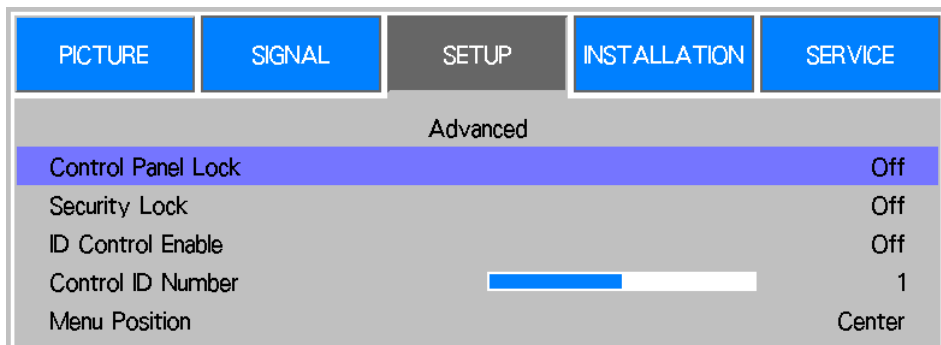


**Caution**

The people listed below shall be aware when watching 3D images:

- Children under six years in age.
- People who are allergic to light, unhealthy and have the history of cardiovascular.
- People who are tired or lack of sleep.
- People who are under the impact of drug or alcohol.
- Normally, it's safe to watch 3D images. However, some people might feel uncomfortable. Refer to the guidelines revised and released by the 3D League on December 10, 2008.
- People need to take a break for at least 5 to 15 minutes every thirty minutes or one hour.

**Advance**



**Control Panel Lock**

This function allows you to lock control panel on the projector. Set it to On to lock the control panel, otherwise, set it to Off to unlock the control panel.

**Security Lock**

The projector has a built-in security feature to lock the OSD control panels and deny remote control operation for preventing the unauthorized use of the Projector. To lock the projector, please select the option to On and define a password followed the popup window.

**ID Control Enable**

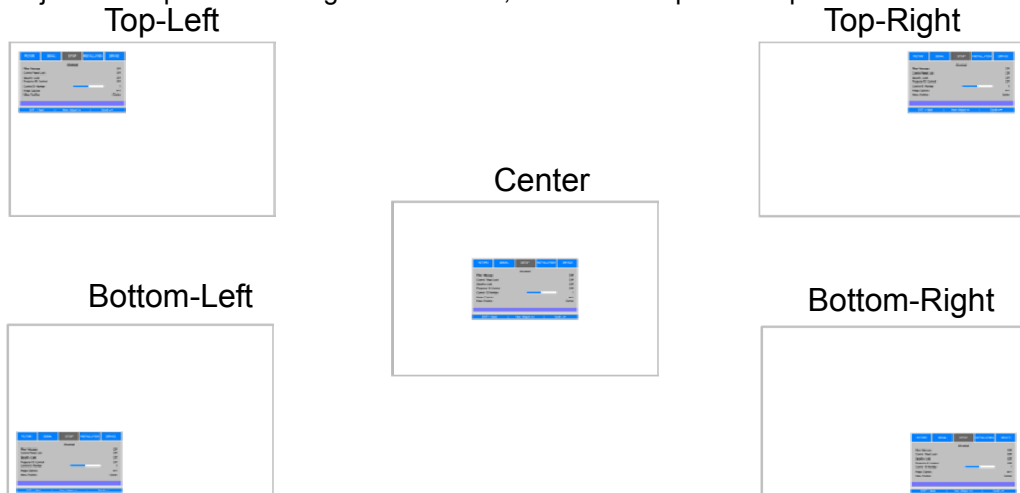
This option allows you to enable the projector ID control function. You can turn on this function and give an ID number for the projector, then set the same ID number for the remote control to match the projector ID. After ID code is set, you can control the specified projector by the remote control.

**Control ID Number**

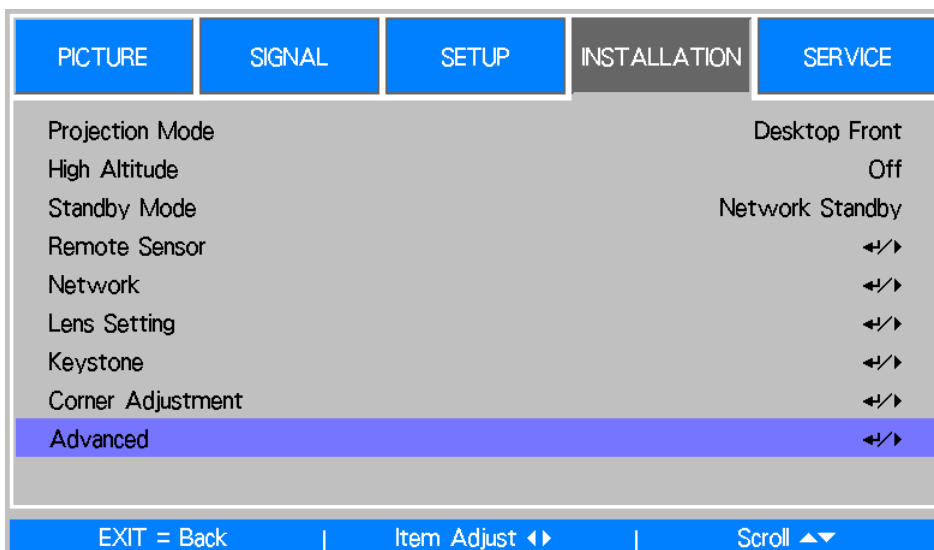
Select the option then press ◀ or ▶ to set the ID number of the projector, this option is selectable when Projector ID Control is enabled.

**Menu Position**

Adjust menu position through this function, the available position options as below.



## OSD Operation - INSTALLATION



### Projection Mode

Use the ◀ or ▶ buttons to select a projection mode to change the direction of the image. The selectable options are as follow:

- Auto-Front:** Turn on the orientation sensor to change automatically the direction of the image.
- Desktop Front:** Install the projector on the desktop and project the image forward.
- Desktop Rear:** Install the projector on the desktop and project the image from the rear of the screen.
- Ceiling Front:** Mount the projector on the ceiling and project the image forward.
- Ceiling Rear:** Mount the projector on the ceiling and project the image from the rear of the screen.

### High Altitude

Use this function when using the projector above an altitude of 1,219 m. The cooling fan needs to be regulated to a higher speed for better cooling in a high altitude environment. The selectable options are as follow:

- Sea Level:** When using the projector under 4000ft (1219m).
- A1 (4000ft/1219m):** When using the projector between 4000ft (1219m) to 8000ft (2438m)..
- A2 (8000ft/2438m):** When using the projector above 8000ft (2438m).

### Standby Mode

Use the ◀ or ▶ buttons to set up Standby Mode.

- Network Standby:** The projector maintains in the standby status at higher power (<3W) for network control. In this mode, the projector can be turned on via network control system.
- Eco:** The projector maintains in the standby status at the lowest power (<0.5W), the projector can be turned on using the remote control, RS-232 command.

### Remote Sensor

This function allows you to setup the IR control signal receiving from which receiver of the projector.

- Front / rear:** Both front IR and rear IR receiver are turned on.
- Front:** Turn on front IR receiver only; rear IR receiver is turned off.
- Rear:** Turn on rear IR receiver only; front IR receiver is turned off.
- HDBaseT:** Select HDBaseT input for IR control signal transmitting if the optional HDBaseT transmitter is capable of IR signal receiving and transmitting. Both front IR receiver and back IR receiver are turned off if the option is selected.
- Off:** Turn off all of receivers.



- All of IR signal receiving is disabled when the option is selected to Off, the projector can be operated by control buttons on the projector and RS-232 command only.

**Network**

PICTURE	SIGNAL	SETUP	INSTALLATION	SERVICE
Network				
IP Address				192.168.0.100
Subnet Mask				255.255.255.0
Gateway				192.168.0.1
DNS				192.168.0.1
DHCP				Off
Apply				←/→
MAC Address				00:00:00:00:00:00
EXIT = Back   Item Adjust ◀▶   Scroll ▲▼				

Use this function to set up network configurations so that you can control the projector via the network. Press ▲ or and Enter button to select the option:

**IP Address:** To specify an IP address.

Press the Enter button to show the IP address input window, use the ◀ or ▶ button to select the number in the address to be changed, ▲ or ▼ button to increase or decrease the number in the IP address.

IP Address
255 . 255 . 255 . 255

**Subnet:** Set the subnet, the input method is same as the IP address.

**Gateway:** Set the gateway, the input method is same as the IP address.

**DNS:** Set the DNS, the input method is same as the IP address

**DHCP:** Set DHCP to ON/OFF. When DHCP is set to ON, the DHCP server of the domain will assign an IP address to the projector. The IP address will appear in the IP address window and you don't need to make any input. Otherwise, the domain does not or cannot assign any IP address, and 0. 0. 0. 0 is shown on the IP address window.

**Apply:** Select this button and press Enter. It takes the projector several seconds to execute the change of the network setting till the following message disappears.

Setting Network configuration, please wait

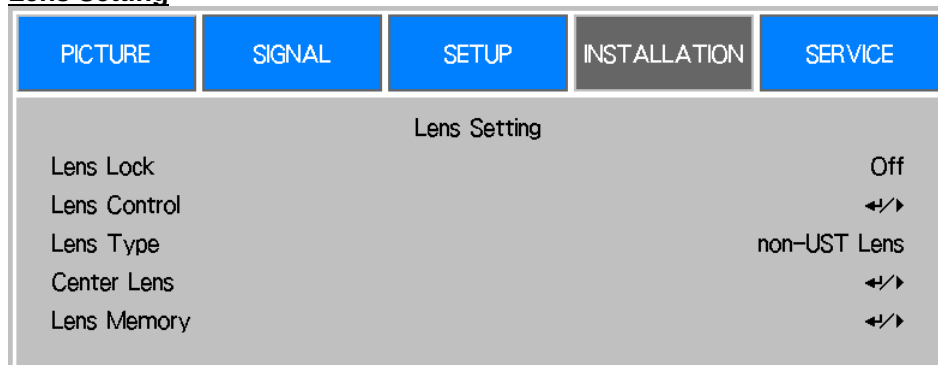
**MAC Address:** Display Mac address of the projector.

For more information about the network control connection and setting, refer to Remote Communication Guide



- Any change you made is restored in the projector after Apply option is confirmed.

**Lens Setting**



**Lens Lock**

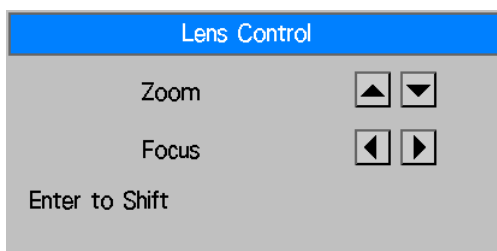
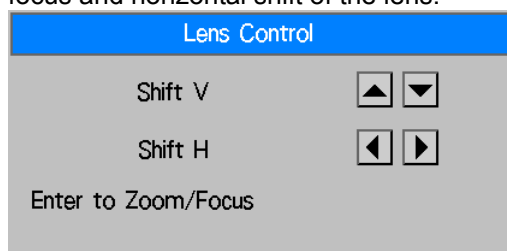
This function can be used to disable lens control for preventing unauthorized operation or disoperation in lens control related functions including Lens Shift, Zoom/Focus adjustment and Center Lens. Recommend to turn on Lens Lock function to disable the Lens control after lens adjustment is done



- Turning on Lens Lock will disable lens control function including Lens Shift, Center Lens and Zoom/Focus adjustment, please make sure Lens Lock is disable before you perform the lens control function.

**Lens Control**

Select this function to display Lens Control menu for adjustment of Zoom, Focus, or Shift. You can use the ENTER button to switch the Zoom / Focus or Shift menu. Use ▲ or ▼ to adjust zoom and vertical shift of the lens, or use ◀ ▶ to adjust focus and horizontal shift of the lens.



**Lens Type**

There are eight projection lenses can be used in DU6771; the initial projection position of Ultra Short Throw (UST) Lens is different to other seven projection lenses. The projector preset two initial projection positions for Ultra Short Throw lens and the others accordingly, Center Lens function can moves the lens to the initial position (center) automatically according Lens Type setting. Please set this option to UST Lens if Ultra Short Throw Lens is installed in the projector, otherwise please set it to Non-UST Lens.



- There are two default positions, one is for regular zoom or fixed focus lens (Non-UST), the reference position is 0% of image width in horizontal shift and 0% of the image height in vertical shift; another one is for Ultra Short Throw Lens (UST), the default position is around 0% of image width in horizontal shift and 56% of image height in vertical shift. When performing Center Lens functions, projector will move the lens to the default position according to Lens Type setting.
- If Ultra Short Throw Lens is installed and UST Lens is selected, you can perform Center Lens to move Lens to initial projection position automatically.
- If using Ultra Short Throw Lens and setting to Non-UST Lens, the lens will be moved to the position which is lower than the default position of Ultra Short Throw Lens after performing Center Lens function, it causes the projected image is blocked by the top cover of the projector. In this case, please perform the Lens shift function to move up the Lens till the image can be projected normally.



- please make sure Lens Type setting is set to Non-UST Lens then perform Center Lens function if other zoom lens or fixed focus lens is used, or lens shift range is limited, center position of the lens is not correct.

**Center Lens**

This is the lens calibration function, the projector calibrates the lens shift, focus and zoom parameters for the precise lens memory function. After performing this function, the lens will be moved to the corresponding center position by Lens Type setting.



- There are two default center positions for UST (Ultra Short Throw) Lens and non-UST Lens, make sure Lens Type setting is correct before performing this function.
- If Ultra Short Throw Lens is installed, make sure the support kit is detached before performing Center Lens.

**Lens Memory**

This projector supports Lens Memory function, Lens shift, Zoom and Focus memory can be stored in the projector up to 10 sets. You can load the stored memory setting to set up the lens automatically, and give a name for the memory set by keyboard simulator as below figure.

**Load Memory:** Use ▲ or ▼ to select the desired memory setting then press ENTER button to execute the lens setting, the projector will adjust the Lens position, Zoom and Focus automatically.

**Save Memory:** Use ▲ or ▼ to select the memory set for storing the setting then press ENTER button to confirm.

**Clear Memory:** Select the memory set to be cleared then press ENTER button to confirm clearing memory set.



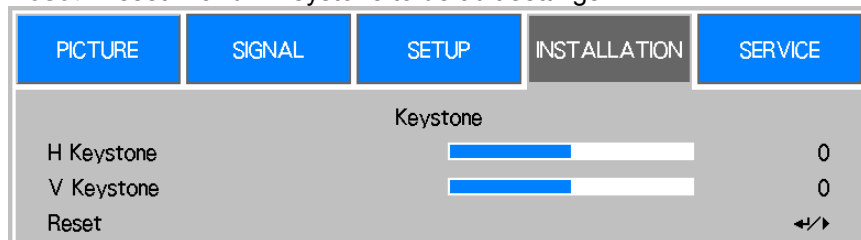
**Keystone**

When the image is projected toward the screen at angle, the image becomes distorted trapezoid; this function can be used to correct the distortion.

**H Keystone:** Use ◀▶ to correct the distortion in horizontal direction.

**V Keystone:** Use ▲▼ to correct the distortion in vertical direction.

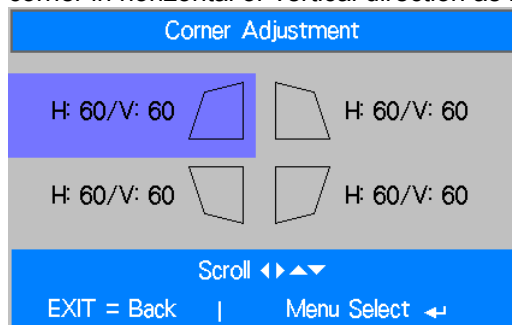
**Reset:** Reset H and V keystone to default settings.



Refer to the section "Correcting Keystone Distortion"

**Corner Adjustment**

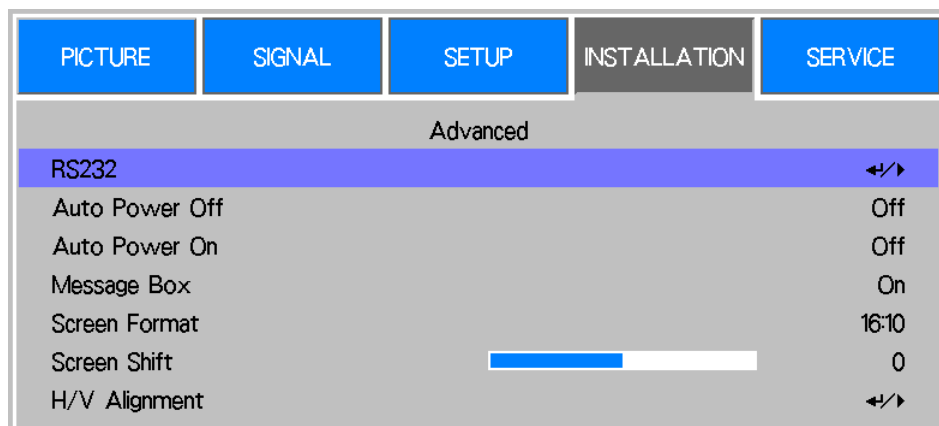
Keystone adjust the four corners followed specified ratio at the same time, this function allows you to adjust the individual corner in horizontal or vertical direction as below illustration



Refer to the section "Correcting Distortion at the Corner"



## Advanced Menu



### RS232

**Baud Rate:** Set the transmission rate to 38400, 19200, 9600. The setting of the transmission rate is dependent on the length of the RS-232 cable. Low transmission rate is usually set for which transmission distance is long; please select a suitable transmission rate.

**Channel:** The RS232 control command can be sent to the projector through its RS-232 port, the command can also be sent to the projector through the external HDBaseT transmitter to HDBaseT/LAN terminal of the projector. Set the following communication channels before sending the control command

**Local:** The RS-232 control command is sent through the RS-232 port on the projector. Select an appropriate transmission rate.

**HDBaseT:** Transmission is conducted from the external HDBaseT transmitter to the RJ-45 port on the projector. The transmission rate is switched to 9600.

### Auto Power Off

This function is set to OFF by default. When it is set to ON and no input signal is received within 20 minutes, the projector will turn off automatically.

### Auto Power On

This function is set to OFF by default. When it is set to ON, the projector will turn on automatically when y AC power is turned on next time. You can use this function and the power switch (instead of the remote control) to turn on the projector. Set this function to OFF if it's unnecessary.

### Message Box

This function allows you to disable the pop-up message at bottom-right of the screen or any reminding message. Set this option off to disable the message on the screen except of OSD menu.

### Screen Format

This function allow you to resize the projected image for fitting the projection screen, the selectable screen format is 16:10, 16:9, 4:3. The projected image is scaled down if the option is set to 16:9 or 4:3, the image can be moved a little bit for fitting screen by Screen Shift function.

### Screen Shift

This function allows you to adjust projected image position if screen format is not set to native aspect ratio. For example, native aspect ratio of the projector is 16:10, the image can be moved up or down if Screen Format is set to 16:9; the project ted image can be moved left or right if Screen Format is set to 4:3. The option can't be selected if screen format is set to native aspect ratio of the product.

### H/V Alignment

**H Zoom:** Use ◀▶ to narrow the horizontal size of the projected image.

**V Zoom:** Use ◀▶ to narrow the vertical size of the projected image.

**H Shift:** Use ◀▶ to move the narrowed projected image horizontally. This function is only available when the projected image is narrowed.

**V Shift:** Use ◀▶ to move the narrowed projected image vertically. This function is only available when the projected image is narrowed.

**Reset:** Set the H/V Alignment back to the factory default value.

## OSD Operation - SERVICE

PICTURE	SIGNAL	SETUP	INSTALLATION	SERVICE
Model :		DU6690Z		
Serial Number :		SN1234567890SN		
Software Version :		MP01-26-LE02-RE04-SE02-E300-3120-P504		
Control / Remote ID :		X / X		
Source Information		←/→		
Usage Time		←/→		
Factory Reset		←/→		
EXIT = Back   Item Adjust ◀▶   Scroll ▲▼				

### Model

Display the projector model name.

### Serial Number

Display the serial number of the projector.

### Software Version

Display the software version in the projector.

### Control/Remote ID

Display current projector ID and remote control ID

### Source Information

Display the current input source information.

### Usage Time

Display current projector time of the projector

**Laser Time:** Display current lamp usage.

**Power On Time:** Display the total Power-On time of the projector.

### Factory Reset

The user can use this function to reset all the settings to factory default.

## Product Specification

Display Type	Single Chip 0.67" DLP Technology	
Brightness	7,000 ANSI Lumens	
Native Resolution	WUXGA (1920 x 1200)	
Maximum Resolution	WUXGA (1920 x 1200)@60Hz (Reduced Blanking)	
Contrast Ratio	100,000:1 (Full On/Full Off)	
Illumination Type	Laser Phosphor	
Throw Ratio*	1.73 - 2.27:1	
Image Size (Diagonal)*	40" - 500"	
Projection Distance*	1.45 - 24.85m (4.77ft to 81.52ft)	
Projection Lens*	F = 1.7 - 1.9, f = 26 - 34mm	
Zoom Ratio*	1.3x	
Aspect Ratio	16:10	
Offset	Motorized Lens Shift	
Keystone Correction	Horizontal $\pm 60^\circ$ , Vertical $\pm 40^\circ$ (adjustable range of single direction)	
Horizontal Frequency	15, 30 – 90Hz	
Vertical Scan Rate	50 - 85Hz	
3D Functionality	Yes (DLP® Link™, HDMI v1.4 (Blu-ray, side by side, frame packing, top and bottom))	
Adjustable Lens Shift Range	Vertical: -33% to +64%, Horizontal: -14% to 24%	
I/O Connection Ports	HDMI v1.4a, DVI-D, DisplayPort, Component (5 BNC), VGA-In, RS-232, VGA-Out, 3D-Sync In/Out, 12v Trigger1/2, Wired Remote, HDBaseT™/LAN (Shared), Service Port	
Projection Method	Table Top, Ceiling Mount (Front or Rear), Free-tilt , Portrait	
Security Solutions	Kensington® Security Slot, Security Bar, Anti-Theft Lens Screw	
Dimensions (WxDxH)	500 x 580 x 205mm (19.7" x 22.8" x 8.1")	
Weight	27kg (59.5lbs)	
Available Colours	White (DU6693Z-WH), Black (DU6693Z-BK)	
Noise Level	32dB (Normal Mode)	
Power Supply	AC 100-240V, 50/60Hz	
Power Consumption	Normal Mode	625W@100Vac, 600W@240Vac
	Standby Power On	Less than 3W
	Standby Power Off (Eco)	Less than 0.5W
Operation Condition	At temperature 0°C to 40°C, relative humidity 10% to 85%,non-condensation	
Storage Condition	At temperature -10°C to 60°C, relative humidity 5% to 95%,non-condensation	
Standard Accessories	AC Power Cord, Remote Control w/Batteries, Lens Cap, Anti-Theft Lens Screw, Documentation Kit	
Optional Accessories	Interchangeable Lens Options	

\*Note: Standard Lens

\*\*Note: Lens shift compatibility with all lenses except D88-WF18501 Wide Fixed Lens (3797745100-SVK) and D88-UST01B Ultra-Short Throw Lens (3797866500-SVK)

## Supported Signal Input Timing

Signal Format	Resolution	H.Freq, (KHz)	Frame Rate (Hz)	Pixel Clock (MHz)	VGA	COMPONENT / BNC		HDMI /DisplayPort/DVI-D HDBaseT		
					RGBHV	RGBHV	Component	RGB	YUV (Bit)	
									8	10
PC	640x480	31.47	59.94	25.18	O	O		O		
	640x480	37.50	75.00	31.50	O	O		O		
	640x480	43.27	85.00	36.00	O	O		O		
	800x600	37.88	60.32	40.00	O	O		O		
	800x600	46.88	75.00	49.50	O	O		O		
	800x600	53.67	85.06	56.25	O	O		O		
	848x480	23.67	47.95	25.00	O	O		O		
	848x480	31.02	60.00	33.75	O	O		O		
	1024*768	48.36	60.00	65.00	O	O		O		
	1024*768	56.48	70.07	75.00	O	O		O		
	1024*768	60.02	75.00	78.75	O	O		O		
	1024*768	68.68	85.00	94.50	O	O		O		
	1152x864	67.50	75.00	108.00	O	O		O		
	1280x720	35.53	47.95	57.99	O	O		O		
	1280 x 768	47.78	60.00	79.50	O	O		O		
	1280 x 768	60.29	74.89	102.25	O	O		O		
	1280 x 768	68.63	84.84	117.50	O	O		O		
	1280 x 800	49.70	60.00	83.50	O	O		O		
	1280 x 800	62.80	74.93	106.50	O	O		O		
	1280 x 960	60.00	60.00	108.00	O	O		O		
	1280 x 960	85.94	85.00	148.50	O	O		O		
	1280x1024	63.98	60.02	108.00	O	O		O		
	1280x1024	79.98	75.02	135.00	O	O		O		
	1280x1024	91.15	85.02	157.50	O	O		O		
	1366 x 768	47.71	60.00	85.50	O	O		O		
	1400X1050	65.32	60.00	121.75	O	O		O		
	1400X1050	82.28	74.87	156.00	O	O		O		
	1440 x 900	55.94	59.89	106.50	O	O		O		
	1440 x 900	70.64	74.98	136.75	O	O		O		
	1600x900	55.92	60.00	119.00	O	O		O		
	1600x1200	75.00	60.00	162.00	O	O		O		
	1680x1050	65.29	60.00	146.25	O	O		O		
	1920x1080	53.23	47.95	135.40	O	O		O		
	1920x1200 RB	74.04	60.00	154.00	O	O		O		
	800x600	76.30	119.97	73.25				O		
	800x600	77.11	119.92	83.89				O		
1024x768 RB	97.55	120.00	115.50				O			
1024x768	98.62	119.83	138.86				O			
1280x768 RB	97.40	119.80	140.25				O			
1280x720	90.00	120.00	148.50				O			
1280x800 RB	101.56	119.91	146.25				O			
Apple Mac	640x480	35.00	66.67	30.24	O	O		O		
	832x624	49.72	74.55	57.28	O	O		O		

Signal Format	Resolution	H.Frec, (KHz)	Frame Rate (Hz)	Pixel Clock (MHz)	VGA	COMPONENT / BNC		HDMI /DisplayPort/DVI-D HDBaseT			
					RGBHV	RGBHV	Component	RGB	YUV (Bit)		
									8	10	12
	1024x768	60.24	74.93	80.00	O	O		O			
	1152x870	68.86	75.06	100.00	O	O		O			
SDTV	480i	15.73	59.94	13.50			O				
	1440x480i	31.47	60.00	27.00				O	O	O	O
	1440x576i	31.25	50.00	27.00				O	O	O	O
	576i	15.63	50.00	13.50			O				
EDTV	480p	31.47	59.94	27.00	O	O	O	O	O	O	O
	576p	31.25	50.00	27.00	O	O	O	O	O	O	O
HDTV	1035i	33.75	60.00	74.25	O	O	O	O	O	O	O
	1080i	28.13	50.00	74.25	O	O	O	O	O	O	O
	1080i	33.72	59.94	74.18	O	O	O	O	O	O	O
	1080i	33.75	60.00	74.25	O	O	O	O	O	O	O
	720p	37.50	50.00	74.25	O	O	O	O	O	O	O
	720p	44.96	59.94	74.18	O	O	O	O	O	O	O
	720p	45.00	60.00	74.25	O	O	O	O	O	O	O
	1080p	26.97	23.98	74.18	O	O	O	O	O	O	O
	1080p	27.00	24.00	74.25	O	O	O	O	O	O	O
	1080p	28.13	25.00	74.25	O	O	O	O	O	O	O
	1080p	33.72	29.97	74.18	O	O	O	O	O	O	O
	1080p	33.75	30.00	74.25	O	O	O	O	O	O	O
	1080p	56.25	50.00	148.50	O	O	O	O	O	O	O
	1080p	67.43	59.94	148.35	O	O	O	O	O	O	O
	1080p	67.50	60.00	148.50	O	O	O	O	O	O	O

**Supported 3D Signal**

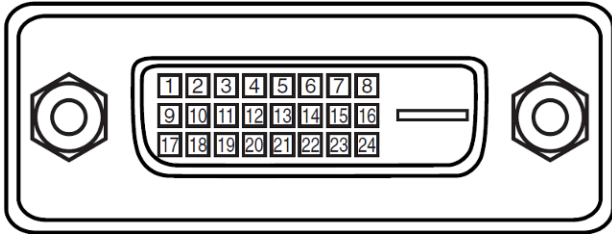
3D Format		Resolution	V-Freq (Hz)	V-Total	H-Freq (kHz)	HDMI
720p50	Frame Packing	1280x720	50.00	1470	37.50	O
720p59	Frame Packing	1280x720	59.94	1470	44.96	O
720p60	Frame Packing	1280x720	60.00	1470	45.00	O
720p50	Top-and-Bottom	1280x720	50.00	750	37.50	O
720p59	Top-and-Bottom	1280x720	59.94	750	44.96	O
720p60	Top-and-Bottom	1280x720	60.00	750	45.00	O
1080p23	Frame Packing	1920x1080	23.98	2205	26.97	O
1080p24	Frame Packing	1920x1080	24.00	2205	27.00	O
1080i50	Side-by-Side (Half)	1920x1080	50.00	1125	56.25	O
1080i59	Side-by-Side (Half)	1920x1080	59.94	1125	67.43	O
1080i60	Side-by-Side (Half)	1920x1080	60.00	1125	67.50	O
1080p50	Side-by-Side (Half)	1920x1080	50.00	1125	56.25	O
1080p59	Side-by-Side (Half)	1920x1080	59.94	1125	67.43	O
1080p60	Side-by-Side (Half)	1920x1080	60.00	1125	67.50	O
1080p50	Top-and-Bottom	1920x1080	50.00	1125	56.25	O
1080p59	Top-and-Bottom	1920x1080	59.94	1125	67.43	O
1080p60	Top-and-Bottom	1920x1080	60.00	1125	67.50	O
1080p50	Frame Sequential	1920x1080	50.00	1125	56.25	O
1080p59	Frame Sequential	1920x1080	59.94	1125	67.43	O
1080p60	Frame Sequential	1920x1080	60.00	1125	67.50	O

\*3D Glasses Refreshing Rate: 96/100/120Hz, the output frame rate is up to 96Hz if input frame rate is 24Hz.

\*3D Sync signal: DLP Link, IR

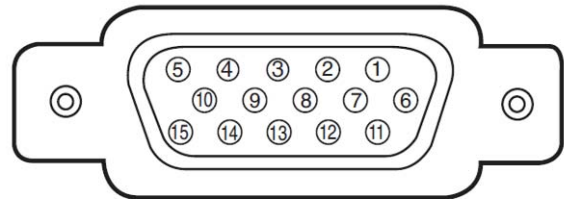
## Configurations of Terminals

### DVI-D Terminal



1	T.M.D.S. Data 2- Input	13	N.C
2	T.M.D.S. Data 2+ Input	14	P5V
3	Ground	15	Ground
4	N.C	16	HPD
5	N.C	17	T.M.D.S. Data 0- Input
6	SCL	18	T.M.D.S. Data 0+ Input
7	SDA	19	Ground
8	N.C	20	N.C
9	T.M.D.S. Data 1- Input	21	N.C
10	T.M.D.S. Data 1+ Input	22	Ground
11	Ground	23	T.M.D.S. Clock+ Input
12	N.C	24	T.M.D.S. Clock- Input

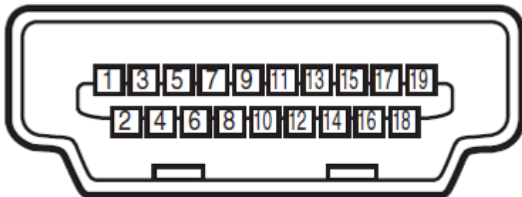
### VGA Terminal ( D-sub 15 pin)



#### Input

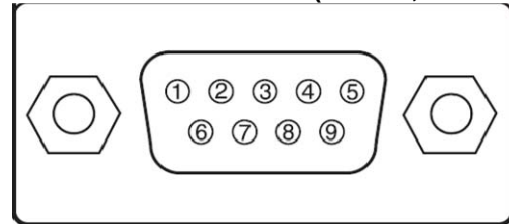
1	Red Input	9	P5V
2	Green Input	10	GND
3	Blue Input	11	GND
4	N.C	12	VGA_SDA
5	N.C	13	H-Sync
6	GND	14	V-Sync
7	GND	15	VGA_SCL
8	GND	16	GND

### HDMI(19 pin Type A)



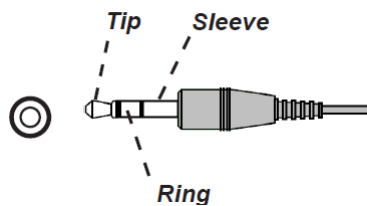
1	T.M.D.S. Data 2+ Input	11	Ground
2	Ground	12	T.M.D.S. Clock C- Input
3	T.M.D.S. Data 2- Input	13	CEC
4	T.M.D.S. Data 1+ Input	14	N.C
5	Ground	15	SCL
6	T.M.D.S. Data 1- Input	16	SDA
7	T.M.D.S. Data 0+ Input	17	Ground
8	Ground	18	P5V
9	T.M.D.S. Data 0- Input	19	HPD
10	T.M.D.S. Clock C+ Input		

### Serial Control Terminal (RS-232, D-sub 9 pin)



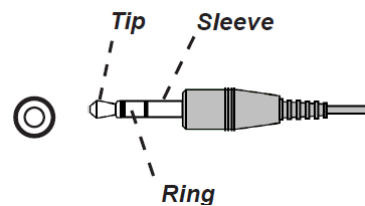
	Serial
1	N.C
2	RXD
3	TXD
4	N.C
5	Ground
6	N.C
7	Short with pin8
8	Short with pin7
9	N.C

### Screen Trigger



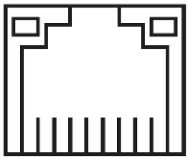
1	Tip	VCC(12V)
2	Sleeve-	Ground
3	Ring	Signal

### Wired Remote



1	Tip	VCC(3.3V)
2	Sleeve-	Ground
3	Ring	Signal

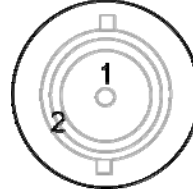
**HDBaseT/LAN Terminal (RJ-45)**



8 7 6 5 4 3 2 1

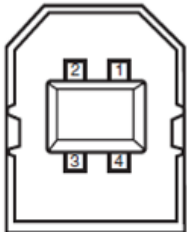
1	TX+
2	TX-
3	TXC
4	Ground
5	Ground
6	RXC
7	RX+
8	RX-

**3D Sync Out**



1	Signal
2	Ground

**Service (USB Type B)**



1	VCC
2	D-
3	D+
4	Ground

**DU6693Z Lens Series**

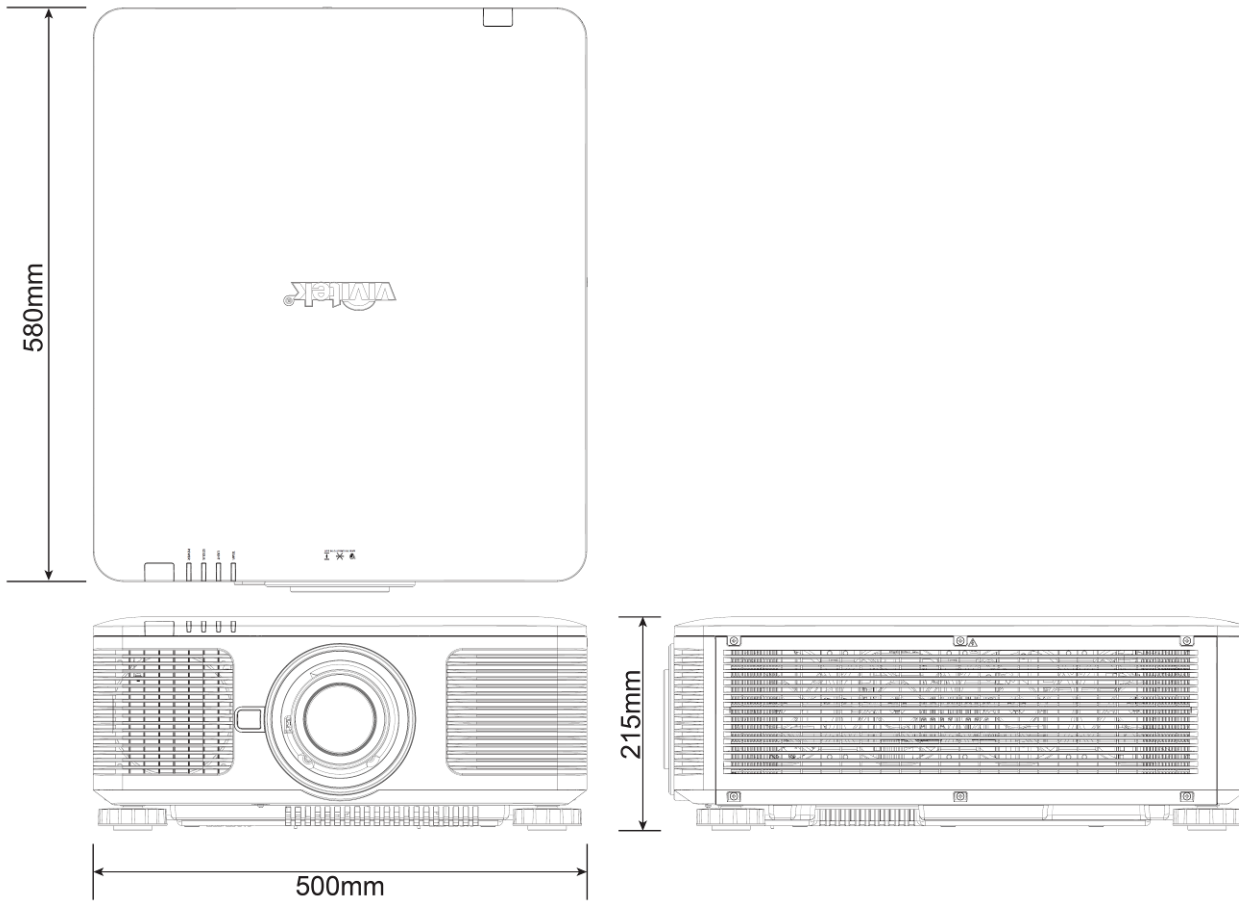
Eight types of optional electric lenses are available for the projector as below table. Contact the authorized dealer of Vivitek for details.

Part Number	Lens Name	F Number	Focal Length	Zoom Ratio	Screen Size	Throw Ratio
D88-UST01B	Ultra Short Throw	2.0	5.64mm	---	100"-350"	0.377:1
D88-UWZ01	Ultra Wide Zoom	1.96-2.3	11.3-14.1mm	1.25:1	40"-500"	0.75-0.93:1
D88-WF18501	Wide Fix	1.85	11.6mm	---	40"-500"	0.76:1
D88-WZ01	Wide Zoom	1.85-2.5	18.7-26.5mm	1.41:1	40"-500"	1.25-1.79:1
D88-ST001	Standard Lens	1.7-1.9	26-34mm	1.3:1	40"-500"	1.73-2.27:1
D88-SMLZ01	Semi Long Zoom	1.86-2.48	32.9-54.2mm	1.65:1	40"-500"	2.22-3.67:1
D88-LOZ101	Long Zoom 1	1.85-2.41	52.8-79.1mm	1.5:1	40"-500"	3.58-5.38-1
D88-LOZ201	Long Zoom 2	1.85-2.48	78.5-121.9mm	1.55:1	40"-500"	5.31-8.26:1

- The best performance of above zoom lenses is within vertical shift 0-50%, horizontal shift  $\pm 10\%$ , the projector may support to wider adjustable shift range for flexibility in installation.
- D88-WF18501 and D88-UST01B are fixed lens, the vertical and horizontal shift range of the projection lens are 0%, the corners of the projected image may appear shadows or distortion if lens is shifted horizontally or vertically.

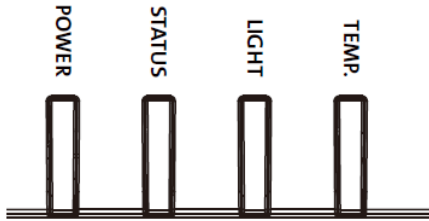


## Product Dimensions



## LED Indication

Several indicators messages are used to display the current projector status or alert the abnormal message.



### Power LED

LED Display		Projector status	Procedure
Off		AC Power is turned off	
Flashing	Green	Projector is turning on.	wait till projector start displaying
	Orange	Projector is under cooling	wait until cooling finish ( ~ 120 sec)
On	Red	Standby mode	
	Green	Projector is on	

### Status LED

LED Display		Projector status	Procedure
Off		Normal status	
Flashing	Red (Cycles of 1)	Cover is opened.	Check if the top cabinet is installed properly.
	Red (Cycles of 4)	Cooling fan error	Contact with your nearest authorized dealer or service center.
On	Red	System Error	Contact with your nearest authorized dealer or service center.

### Light Source LED

LED Display		Projector status	Procedure
Off		Light source is off	
Flashing	Green	Projector is turning on.	
	Red (Cycles of 6)	Light source lit fail	Contact with your nearest authorized dealer or service center.
On	Red	Light source is end-of-life	Contact with your nearest authorized dealer or service center.
	Green	Light source is on	

### Temp LED

LED Display		Projector status	Procedure
Off		Normal status	
Flashing	Red	Over temperature error	Contact with your nearest authorized dealer or service center.

## Common Problems and Solutions

These guidelines provide tips to deal with problems you may encounter while using the projector. If the problem remains unsolved, contact your dealer for assistance.

Often the problem is something as simple as a loose connection. Check the following before proceeding to the problem-specific solutions.

- Use some other electrical device to confirm that the electrical outlet is working.
- Ensure the projector is turned on.
- Ensure all connections are securely attached.
- Ensure the attached device is turned on.
- Ensure a connected PC is not in suspending mode.
- Ensure a connected notebook computer is configured for an external display. (This is usually done by pressing an Fn-key combination on the notebook.)

### Tips for Troubleshooting

- In each problem-specific section, try the steps in the order suggested. This may help you to solve the problem more quickly.
- Try to pinpoint the problem to avoid replacing non-defective parts.
- For example, if you replace batteries and the problem remains, put the original batteries back and go to the next step.
- Keep a record of the steps you take when troubleshooting: The information may be useful when calling for technical support or for passing on to service personnel.

### Image Problems

#### **Problem: No image appears on the screen**

1. Verify the settings on your notebook or desktop PC.
2. Turn off all equipment and power up again in the correct order.
3. Check if shutter is enabled.

#### **Problem: The image is blurred**

1. Adjust the Focus on the projector.
3. Performance Auto Sync on the remote control or projector.
4. Ensure the projection distance is within the specified range.
5. Check that if the projection lens is clean.

#### **Problem: The image is wider at the top or bottom (trapezoid effect)**

1. Position the projector so it is as perpendicular to the screen as possible.
2. Use the Keystone function to correct the problem.

#### **Problem: The image is reversed or upside down**

Check the Projection Mode setting on the INSTALLATION->Projection Mode menu.

#### **Problem: The image is streaked**

1. Set the Total dots (H Total) and VGA Setup settings on the INPUT menu of the OSD to the default settings.
2. To ensure the problem is not caused by a connected PC's video card, connect to another computer.

#### **Problem: The image is flat with no contrast**

1. Adjust the Contrast setting on the PICTURE menu of the OSD.
2. Adjust the Brightness setting on the PICTURE menu of the OSD.

#### **Problem: The color of the projected image does not match the source image.**

Adjust the Color temperature and Gamma settings on the PICTURE menu of the OSD.

### Projection Problems

#### **Problem: There is no light from the projector**

1. Check that the power cable is securely connected.
2. Ensure the power source is good by testing with another electrical device.
3. Restart the projector in the correct order and check that the Power LED is green.

4. Check if Blank or Shutter function is enabled

### **Remote Control Problems**

#### **Problem: The projector does not respond to the remote control.**

1. Direct the remote control towards remote sensor on the projector.
2. Ensure the path between remote and sensor is not obstructed.
3. Check the remote sensor on OSD is turned on.
4. Ensure remote control wire is not plugged in the projector.
5. Turn off any fluorescent lights in the room.
6. Check the battery polarity.
7. Replace the batteries.
8. Turn off other Infrared-enabled devices in the vicinity.
9. Have the remote control serviced.
10. Ensure that the remote control code conforms to the projector's code if universal remote control is used.
11. Check if Projector ID control is enabled and the ID number is correct.

### **Projection Lens Problems**

#### **Problem: The Zoom or Focus adjustment cannot work.**

1. Check if the lens is installed properly, improper lens installation may cause to lens cannot work normally. Please follow the lens installation procedure to check again.
2. Check if Lens Lock function is enabled, locking the lens will disable all of lens adjustment functions.
3. Perform Center Lens function to calibrate the Lens again.
4. Replace the other lens to check the problem if the lens is available.
5. Contact with service center for the details.

### **Remote communication Problems**

#### **Problem: The projector does not respond to Ethernet control**

1. Make sure Network Standby is turned on, the communication path is interrupted if it's turned off(less 0.5W)
2. Check the network configuration in your laptop and projector; refer to Remote Communication manual for more information.

### **Having the Projector Serviced**

If you are unable to solve the problem, you should have the projector serviced. Pack the projector in the original carton. Include a description of the problem and a checklist of the steps you took when trying to fix the problem. The information may be useful to the service personnel.

## About the Vivitek Support

If you cannot find solutions from this user guideline, please contact us using the contact information below:

If you cannot find solutions from this user guideline, please contact us using the contact information below:

### Europe, Middle East and Africa

Vivitek Service & Support  
Zandsteen 15  
2132 MZ Hoofddorp  
The Netherlands  
Tel: +31-(0)-20-721-9318  
Email: [support@vivitek.eu](mailto:support@vivitek.eu)  
URL: <http://www.vivitek.eu/support/tech-support>

### North America

Vivitek Service Center  
15700 Don Julian Road, Suite B  
City of Industry, CA. 91745  
U.S.A  
Tel: 855-885-2378 (Toll-Free)  
Email: [T.services1@vivitekcorp.com](mailto:T.services1@vivitekcorp.com)  
URL: [www.vivitekusa.com](http://www.vivitekusa.com)

### Asia and Taiwan

Vivitek Service Center  
5F, No.186, Ruey Kuang Road, Neihu District  
Taipei, Taiwan 11491  
Tel: 886-2-8797-2088, ext. 6899 (Direct)  
Tel: 0800-042-100 (Toll-Free)  
Email: [kenny.chang@vivitek.com.tw](mailto:kenny.chang@vivitek.com.tw)  
URL: [www.vivitek.com.tw](http://www.vivitek.com.tw)

### 中国/China

Vivitek客服中心  
上海市闵行区申长路618号绿谷广场A座7楼  
邮政编码: 201106  
400客服热线: 400 888 3526  
公司电话: 021-58360088  
客服邮箱: [service@vivitek.com.cn](mailto:service@vivitek.com.cn)  
官方网站: [www.vivitek.com.cn](http://www.vivitek.com.cn)